



WELLINGTON
MANAGEMENT

2220 East Lake Street
Minneapolis, MN 55407

Justin Bryant
651-999-5548
jbryant@wellingtonmgt.com

22twenty Retail



1,605 SF of retail space for lease



Retail steps from the Blue Line.

Completed in 2015, 22twenty (F.K.A. Lake Street Station) includes 5,780 SF of ground-floor retail space with 64 apartments above. Located between the Lake Street/Midtown light rail stop and the bustling Hi-Lake Shopping Center, 22twenty exemplifies accessible urban life in a thriving commercial corridor.

HIGHLIGHTS

- Immediately adjacent to Hi-Lake Shopping Center (rebuilt in 2021), including a new Burlington
- Countless walkable food, retail and entertainment options
- Adjacent to the light rail and bus station
- Minutes from Downtown Minneapolis (6-minute drive, 7-minute rail ride)

Space Available

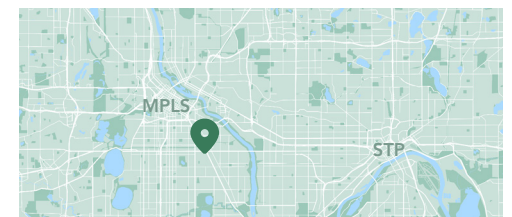
Owner, Developer, Manager, Leasing

5,780 SF retail space; 1,605 SF available

Off-street parking


Built in 2015

Phillips Neighborhood




Available Suites



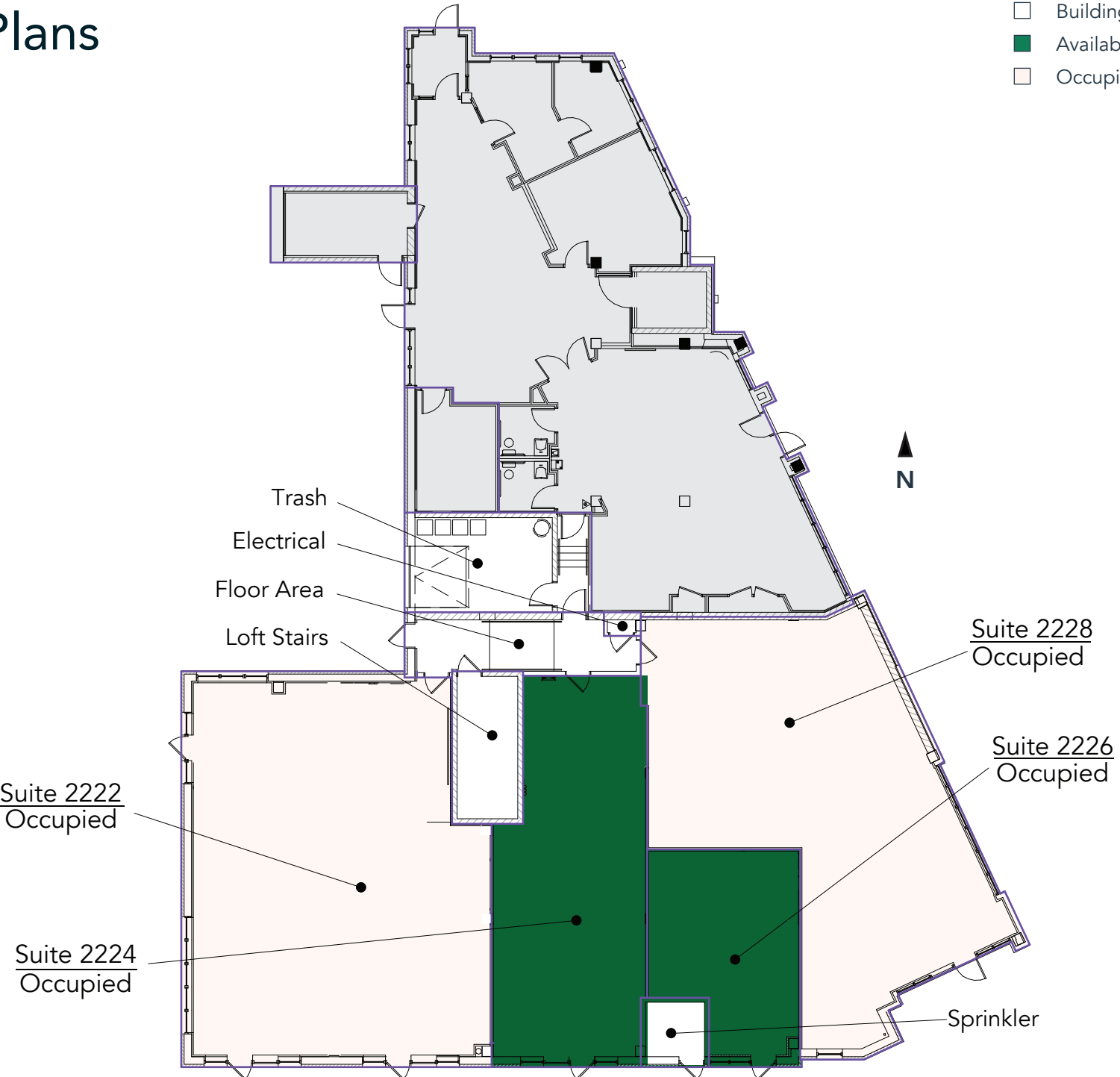
Suite 2224 - 1,067 SF [3D Tour](#) 



Suite 2226 - 538 SF [3D Tour](#) 

Floor Plans

- Building Common Areas
- Available Space
- Occupied Space



Site Plan



Neighborhood Context

Hot Spots

- 22twenty Retail
- Lake Street/Midtown LRT station
- South High School
- Universal Academy
- Midtown Greenway
- Sumo Grill & Buffet
- Pineda Tacos
- Albeiter Brewing
- Moon Palace Books
- The Hub Bike Co-op
- East Lake Library
- Apartments or condos

Demographics

	1 MILE	3 MILES	5 MILES
POPULATION	30,748	253,918	494,855
HOUSEHOLDS	11,100	111,370	212,844
AVG. INCOME	\$55,360	\$72,513	\$83,422



22twenty Retail

2220 East Lake Street
Minneapolis, MN 55407



PROPERTY MANAGER
LEASING AGENT

Justin Bryant

651-999-5548

jbryant@wellingtonmgt.com



WELLINGTON
MANAGEMENT

St. Paul-based Wellington Management, Inc. owns, manages and develops commercial and residential properties throughout the Twin Cities metro area. We work to make long-term community impact through careful district planning and neighborhood relationships.

Main (651) 292-9844
Fax (651) 292-0072
wellingtonmgt.com