

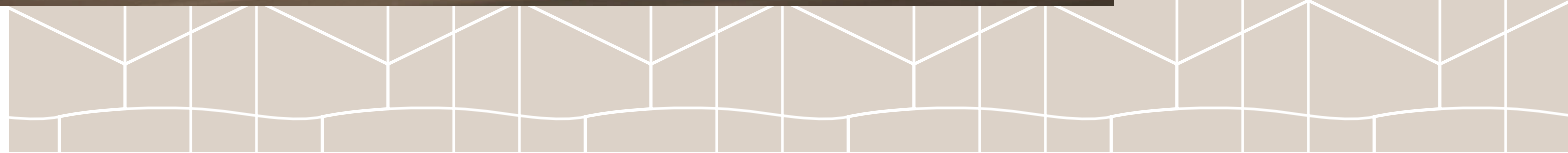


WELLINGTON
MANAGEMENT

2220 East Lake Street
Minneapolis, MN 55407

Greg Croucher
651-999-5515
gcroucher@wellingtonmgt.com

22twenty Retail





Retail steps from the Blue Line.

Completed in 2015, 22twenty (F.K.A. Lake Street Station) includes 5,780 SF of ground-floor retail space with 64 apartments above. Located between the Lake Street/Midtown light rail stop and the bustling Hi-Lake Shopping Center, 22twenty exemplifies accessible urban life in a thriving commercial corridor.

HIGHLIGHTS

- Immediately adjacent to Hi-Lake Shopping Center (rebuilt in 2021), including a new Burlington
- Countless walkable food, retail and entertainment options
- Adjacent to the light rail and bus station
- Minutes from Downtown Minneapolis (6-minute drive, 7-minute rail ride)

Space Available

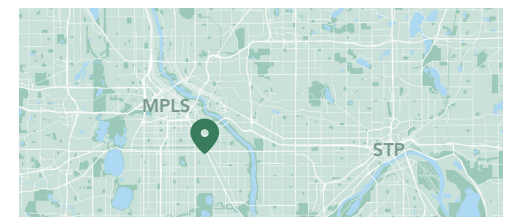
Owner, Developer, Manager, Leasing

5,780 SF retail space; 1,605 SF available

Off-street parking

Built in 2015

Phillips Neighborhood



Available Suites



Suite 2224 - 1,067 SF

3D Tour 

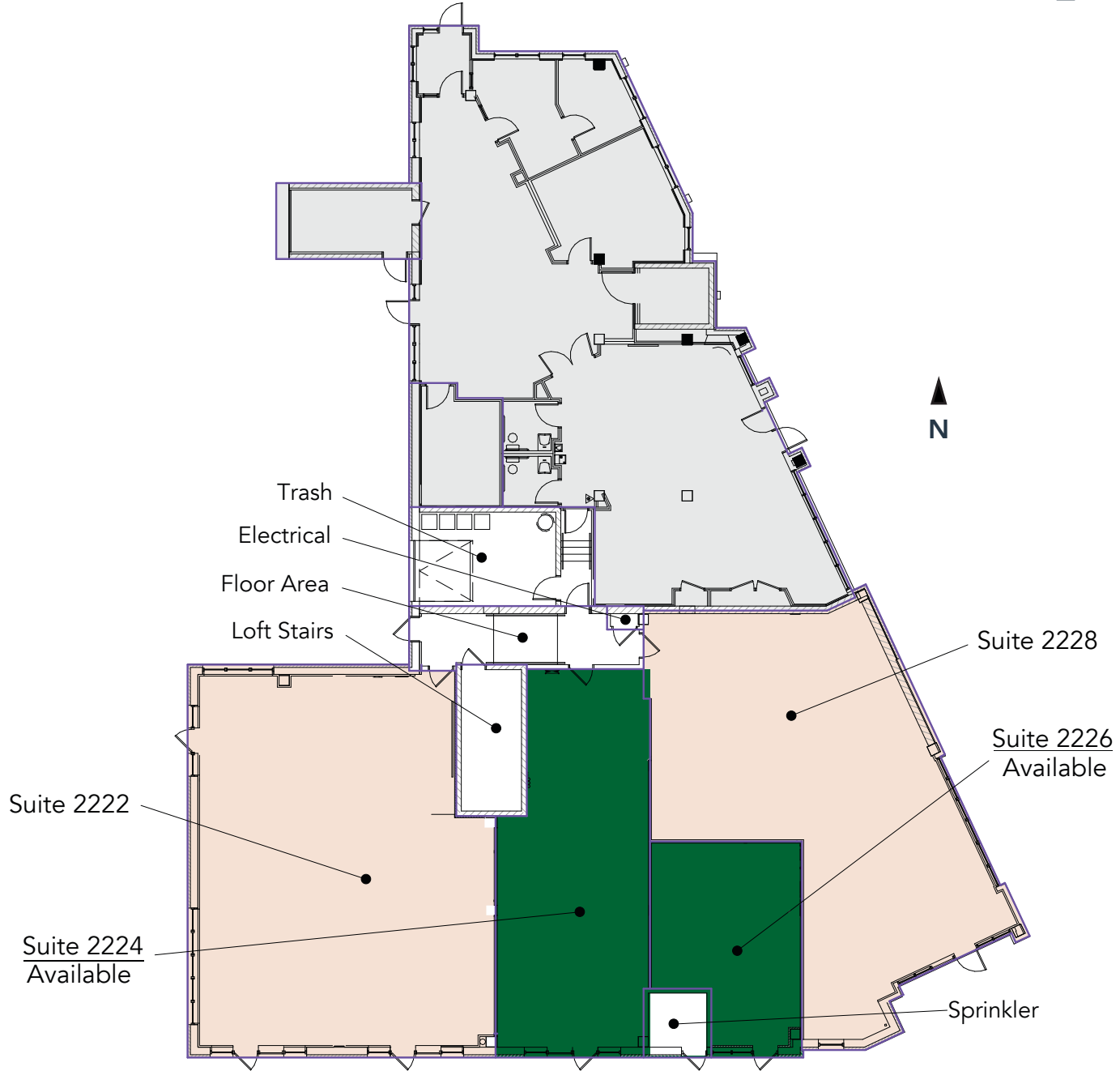


Suite 2226 - 538 SF

3D Tour 

Floor Plans

- Building Common Areas
- Available Space
- Occupied Space



Site Plan



Neighborhood Context

Hot Spots

1. 22twenty Retail
2. Lake Street/Midtown LRT station
3. South High School
4. Universal Academy
5. Midtown Greenway
6. Sumo Grill & Buffet
7. Pineda Tacos
8. Albeiter Brewing
9. Moon Palace Books
10. The Hub Bike Co-op
11. East Lake Library
12. Apartments or condos

Demographics

	1 MILE	3 MILES	5 MILES
POPULATION	30,879	270,919	514,694
HOUSEHOLDS	11,118	123,862	228,493
AVG. INCOME	\$97,689	\$115,146	\$128,907



22twenty Retail

2220 East Lake Street
Minneapolis, MN 55407



PROPERTY MANAGER
LEASING AGENT
Greg Croucher

651-999-5515
gcroucher@wellingtonmgt.com



St. Paul-based Wellington Management, Inc. owns, manages and develops commercial and residential properties throughout the Twin Cities metro area. We work to make long-term community impact through careful district planning and neighborhood relationships.

Main (651) 292-9844
Fax (651) 292-0072
wellingtonmgt.com