

Arbor Lakes North

Retail and office for lease!

7900-7950 Main Street North
12680-12690 Arbor Lakes Parkway
Maple Grove, MN 55369

Kyle Gikling
651-999-5509
kgikling@wellingtonmgt.com



WELLINGTON
MANAGEMENT



Work, shop, dine and walk at the Shoppes.

Arbor Lakes North is an office and retail building prominently located on Main Street in the dynamic Arbor Lakes commercial area of Maple Grove. The beautifully-landscaped property offers an exclusive two-story lobby for the office users, full-service restaurants with patios, card-key access security system, ample surface parking and underground heated parking.

Arbor Lakes North is home to a diverse mix of national, regional and local tenants that promote strong retail traffic. Tenants and visitors enjoy the serene view of North Arbor Lake, seasonal community events, and adjacency to Maple Grove's premier trail system connecting several beautiful lakes, Town Green Park and the Maple Grove Bandshell nearby.

HIGHLIGHTS

- Part of The Shoppes at Arbor Lakes, a high-traffic commercial area
- Ample surface parking and 56 underground tempered parking stalls
- Ideally located north of Interstates 494, 94 and 694
- Adjacent to Maple Grove's premier trail system, which connects several beautiful lakes and Town Green Park
- Tenants include 3 Squares Restaurant, Riviera Maya Cantina, Brookwest Dental, Belladerm Med Spa, among others

Space Available

Owner, Manager, Leasing

81,000 SF total

32,900 total retail; 4,478 SF available

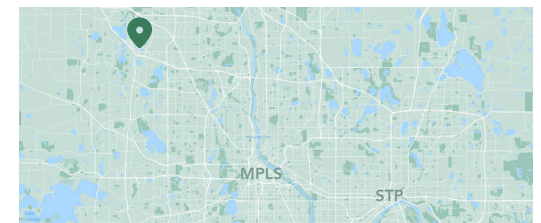
26,834 total office; 2,389 SF available

Surface & underground, 4.3 : 1,000

Two-story retail & office building

Built in 2004

Northwest Metro



Available Suite



Suite 7918 - 2,089 SF

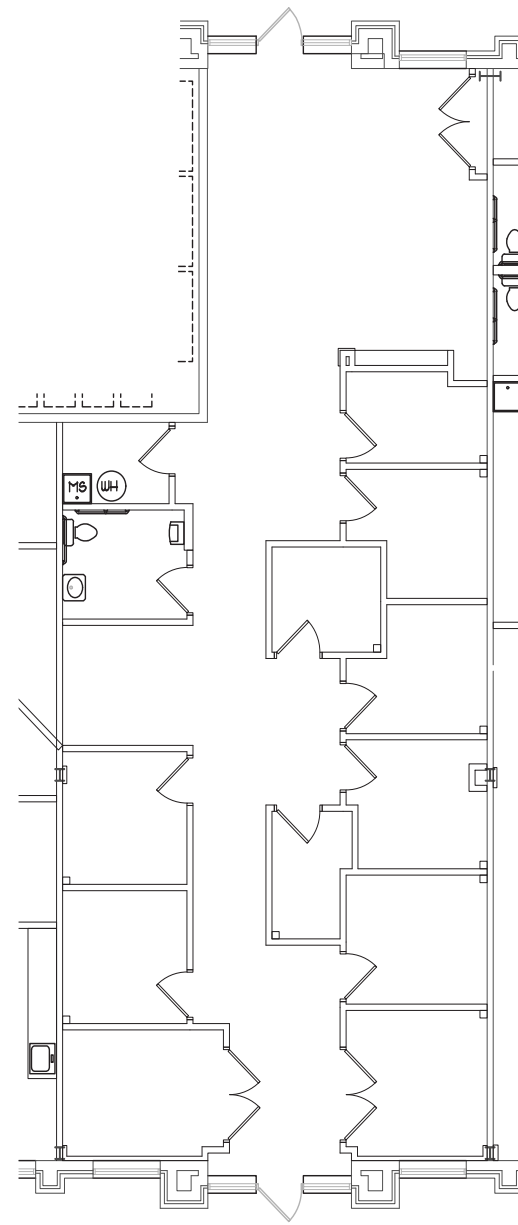
3D Tour 



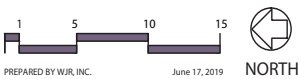
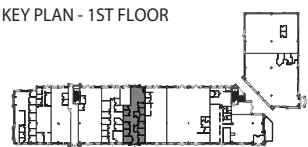
Suite 7928 - 2,389 SF

Available 10/1/25!

Floor Plan - Suite 7918

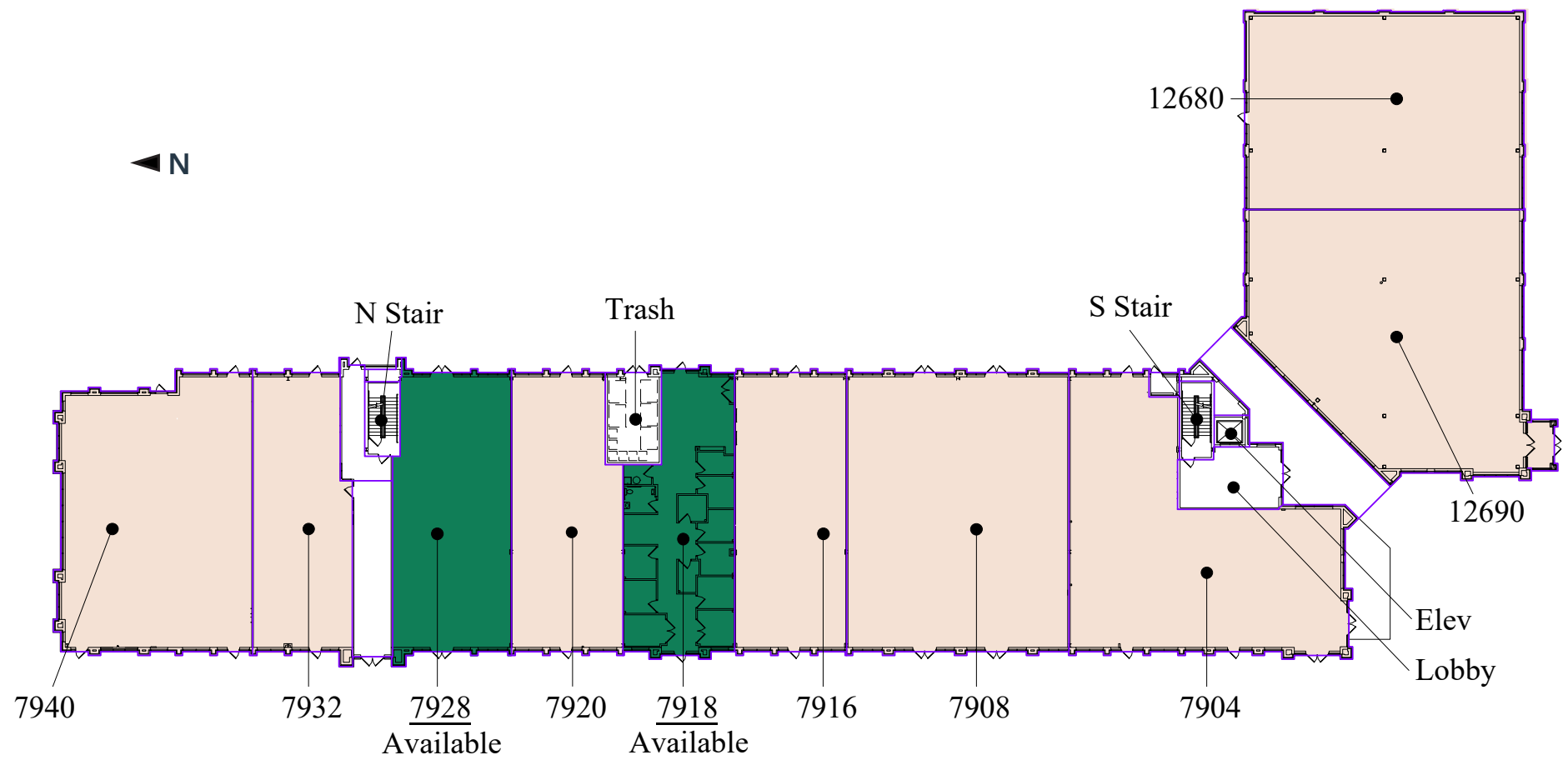


SUITE 7918 - 2,089 RSF
11/5/24



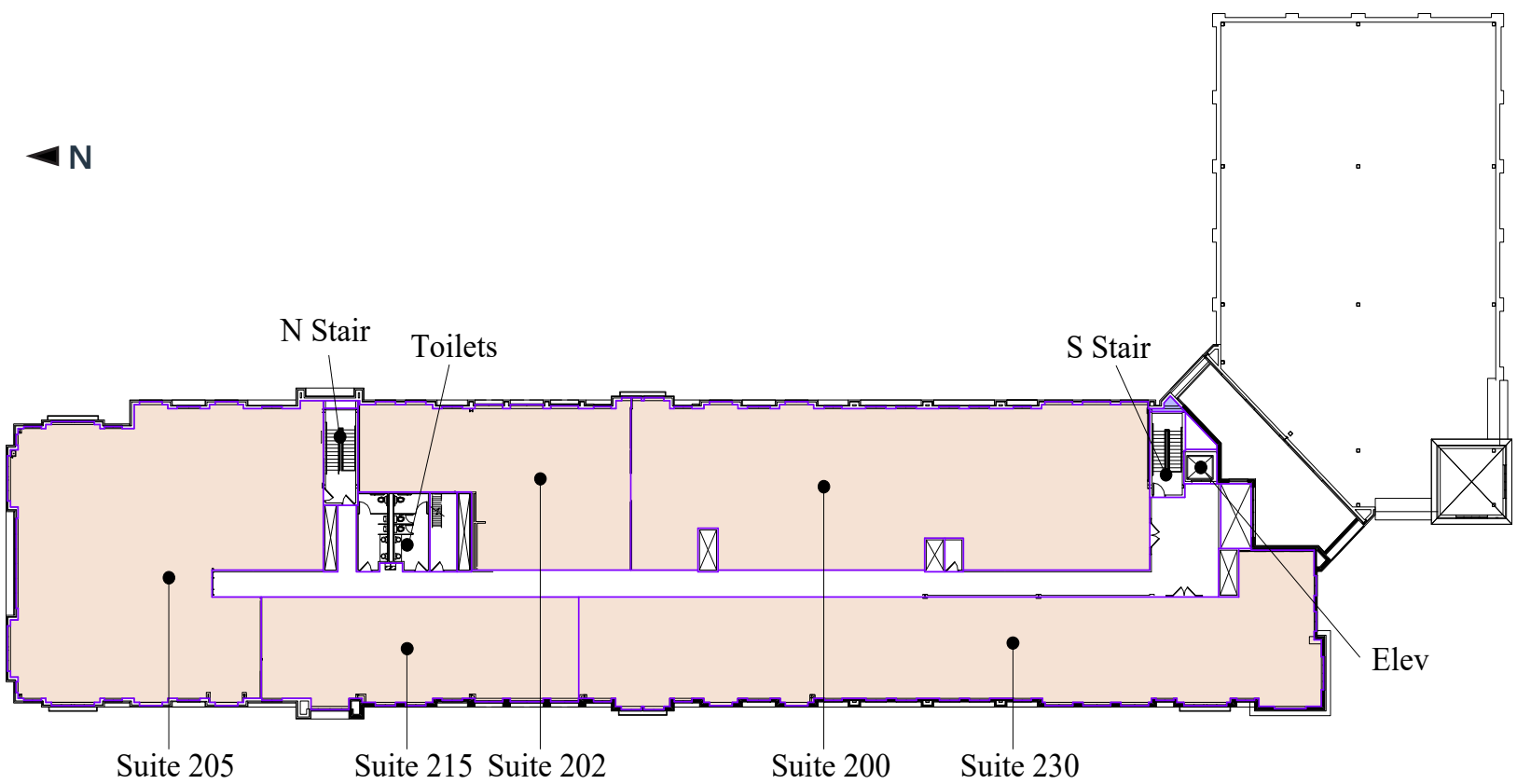
Floor Plan - First Floor

- Building Common Areas
- Available Space
- Occupied Space

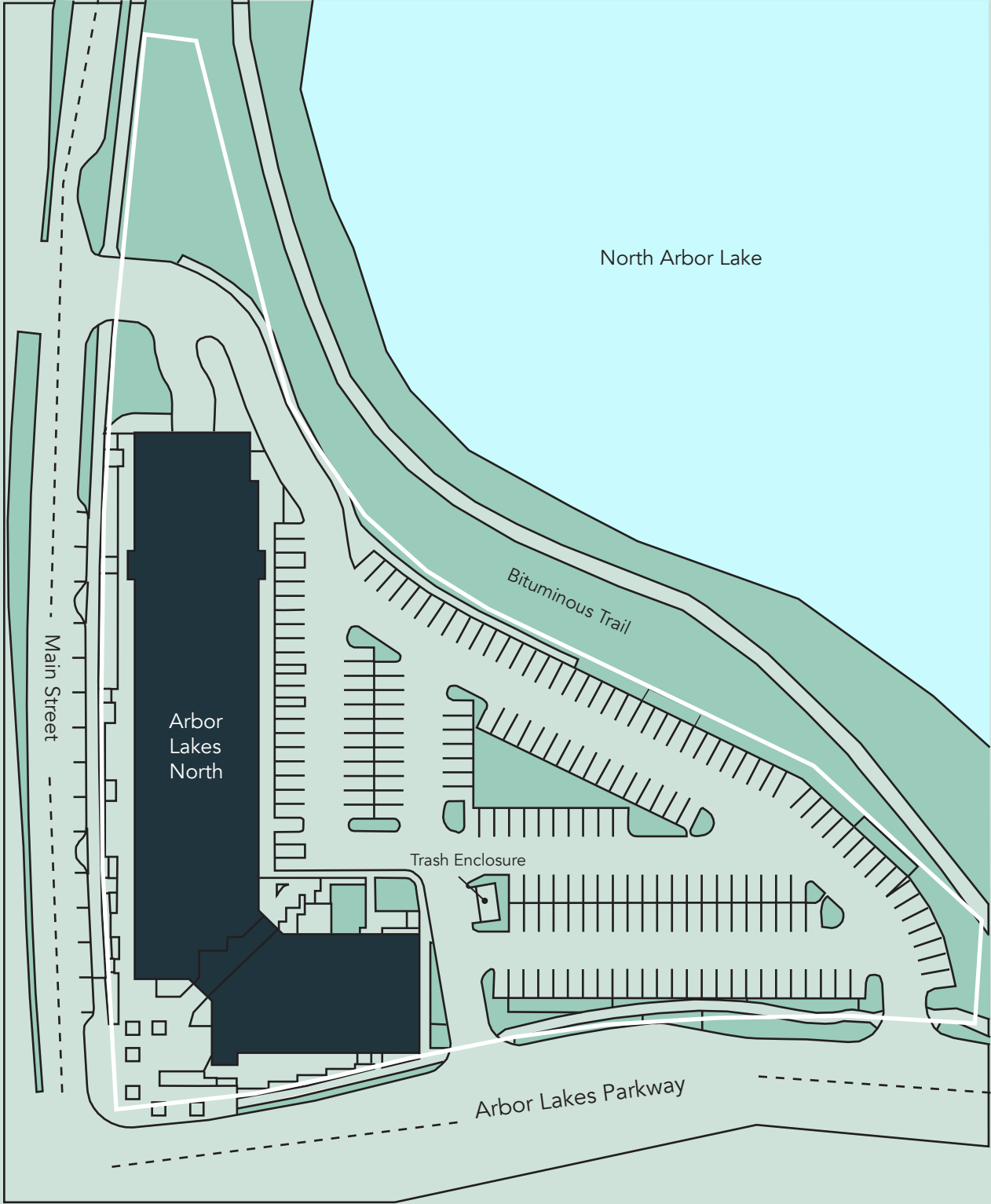


Floor Plan - Second Floor

- Building Common Areas
- Available Space
- Occupied Space

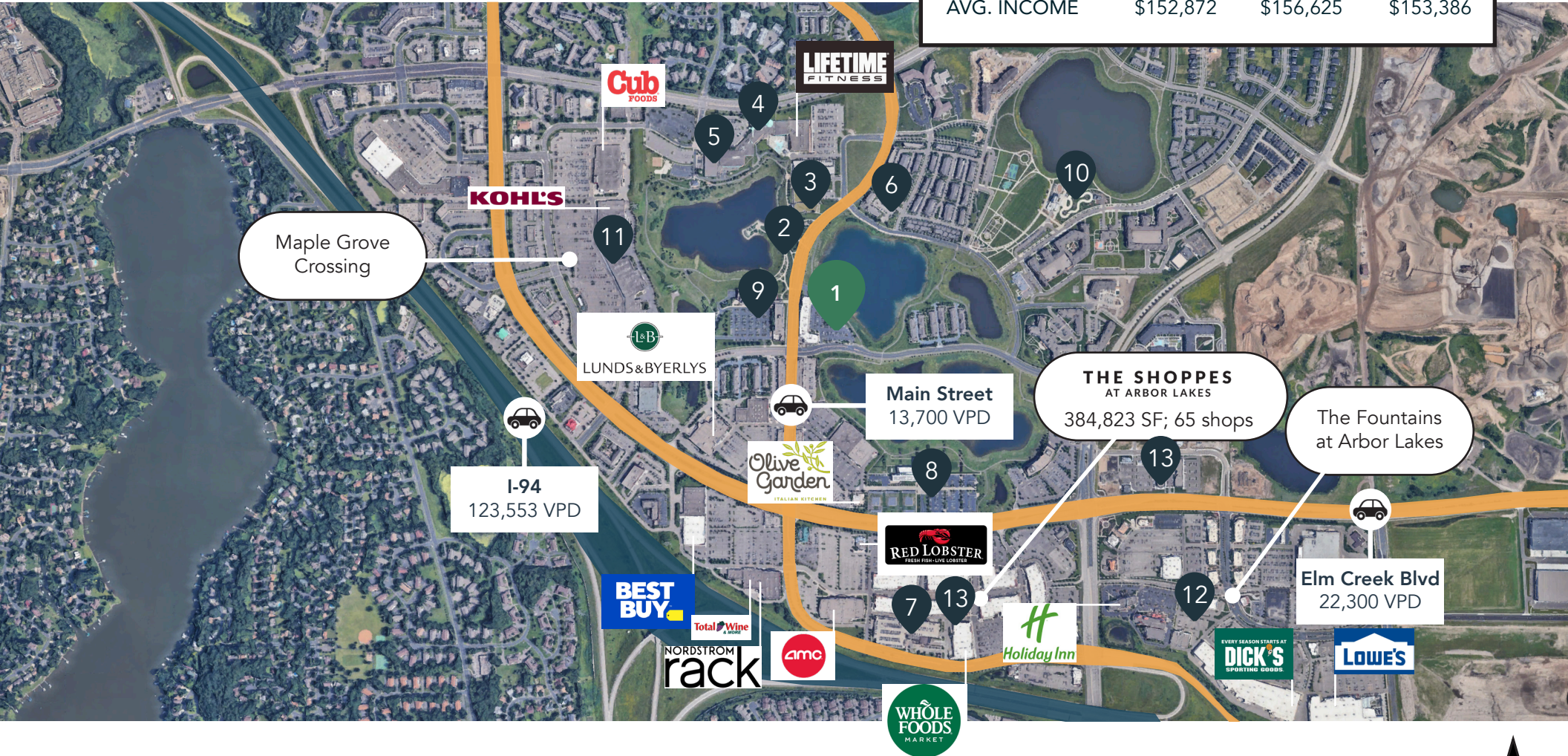


Site Plan



The Neighborhood

Demographics	1 MILE	3 MILES	5 MILES
POPULATION	10,429	56,627	186,936
HOUSEHOLDS	4,756	22,867	70,025
AVG. INCOME	\$152,872	\$156,625	\$153,386



Hot Spots

- | | | | |
|------------------------|--------------------------------|----------------------------------|----------------------------------|
| 1. Arbor Lakes North | 5. Ice Arena | 9. Maple Grove Government Center | 12. The Fountains at Arbor Lakes |
| 2. Town Green Park | 6. Arbor Lakes Commons | 10. Central Park | 13. The Shoppes at Arbor Lakes |
| 3. Maple Grove Library | 7. Maple Grove Transit Station | | |
| 4. Community Center | 8. Great River Energy | 11. Maple Grove Crossing | |



Arbor Lakes North

7900-7950 Main Street North
12680-12690 Arbor Lakes Parkway
Maple Grove, MN 55369



PROPERTY MANAGER
LEASING AGENT

Kyle Gikling

651-999-5509
kgikling@wellingtonmgt.com



St. Paul-based Wellington Management, Inc. owns, manages and develops commercial and residential properties throughout the Twin Cities metro area. We work to make long-term community impact through careful district planning and neighborhood relationships.

Main (651) 292-9844
Fax (651) 292-0072
wellingtonmgt.com

Wellington Management © 2021 All rights reserved.