



WELLINGTON
MANAGEMENT

Burnsville Medical Center

27,480 SF medical & office space available!

14000 Nicollet Avenue
Burnsville, MN 55337

Kori DeJong
651-999-5540
kdejong@wellingtonmgt.com





Ideally located second-generation medical office.

Wellington Management, Inc. is pleased to present Burnsville Medical Center, a Class B medical office building conveniently located a short distance off of interstates 35E and 35W. The four-level center is home to specialty medical tenants that complement offerings at Fairview Ridges Hospital just two blocks west. The property is also within a 5-minute drive of both Burnsville Center and Burnsville Heart of the City.

Professionally managed by Wellington since its acquisition in 2007, Burnsville Medical Center offers a two-level parking deck to the rear of the building, ribbon windows for natural light, ample surface parking in front, and a lower level with windows, storage, vending and break rooms.

HIGHLIGHTS

- Monument signage and potential building signage opportunity
- Two blocks from Fairview Ridges Hospital
- Within 5 minutes of Burnsville Center (1-million SF shopping center) and Burnsville Heart of the City
- Easy access to both interstates 35E and 35W
- Lower level with windows, storage, vending and break rooms
- Two-level parking ramp attached to building with secured building access
- Designated drop-off area
- 9-12' clear heights

Space Available

Owner, Manager, Leasing

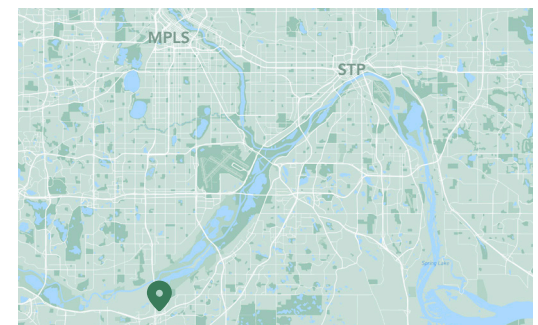
48,000 SF medical office building

27,480 SF available (demisable)

Ramp & surface parking, 4.4 : 1,000 SF

Built in 1997

South Metro



Available Space



Suite 100 - 5,022 SF

3D Tour 



Suite 106 - 2,965 SF

3D Tour 



WELLINGTON
MANAGEMENT

Suite 110 - 2,406 SF Available 4/1/25!

Available Space



Suite 200 - 4,845 SF

3D Tour 

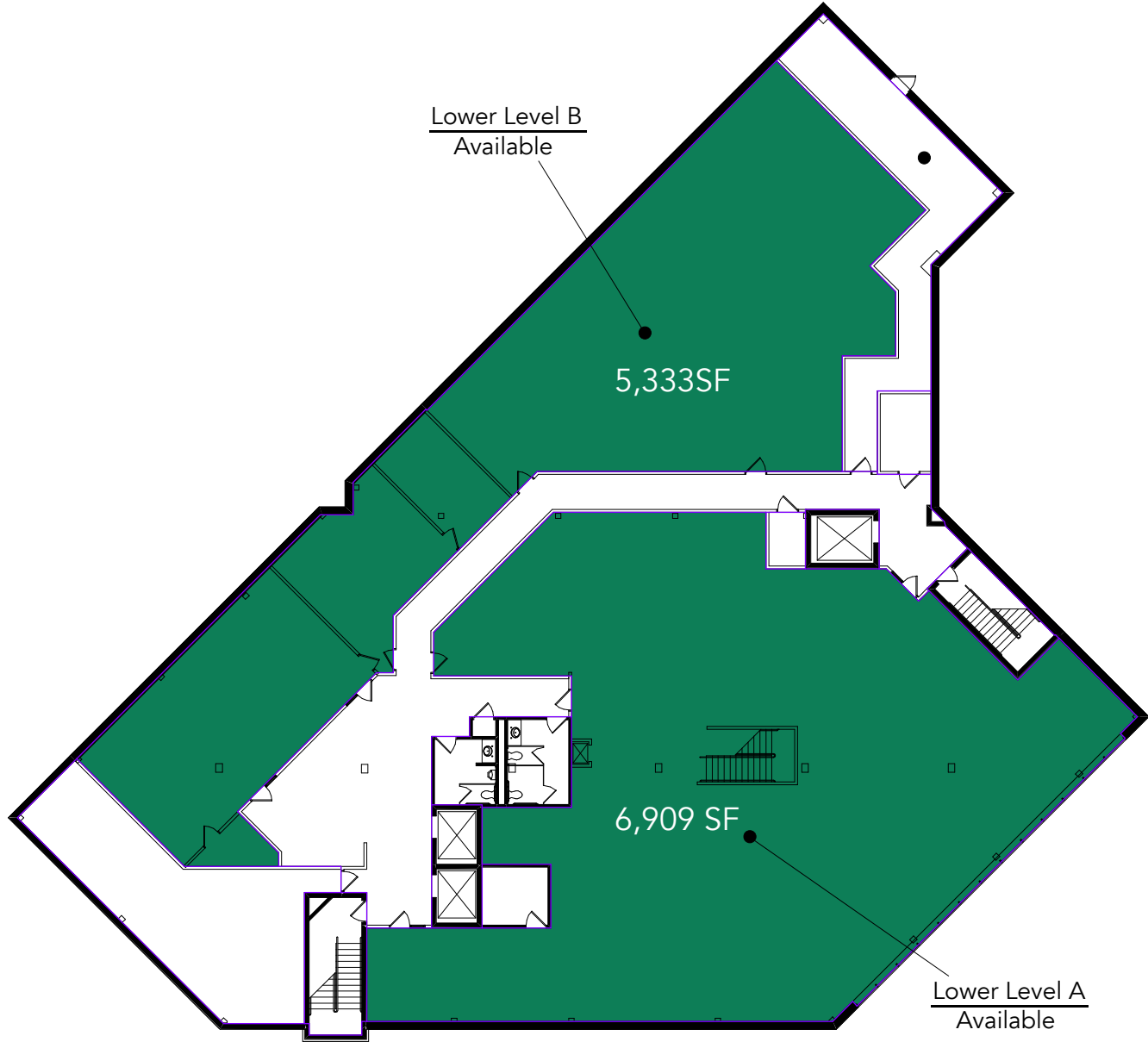


Lower Level - 12,242 SF

3D Tour 

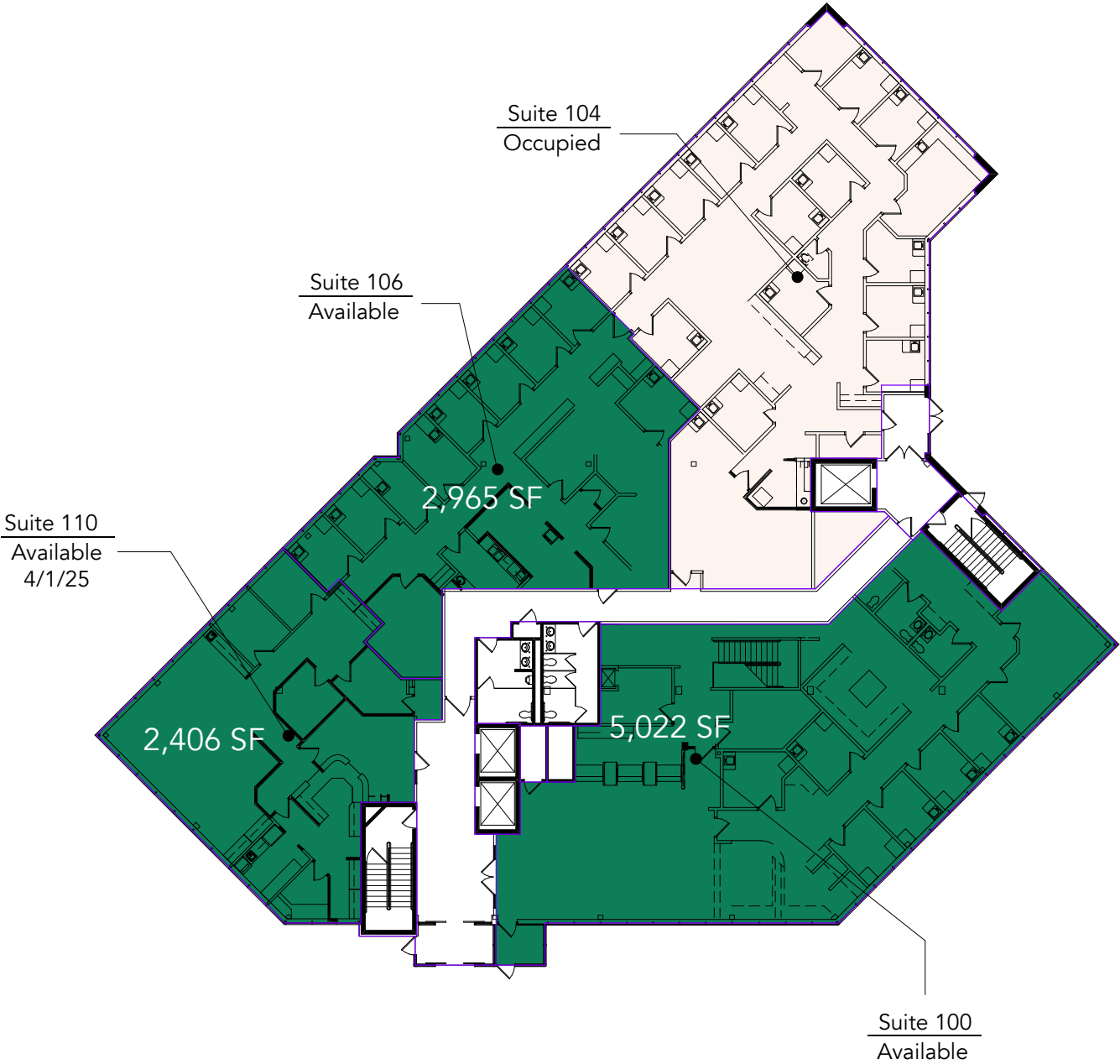
Floor Plan - Lower Level

- Building Common Areas
- Available Space
- Occupied Space



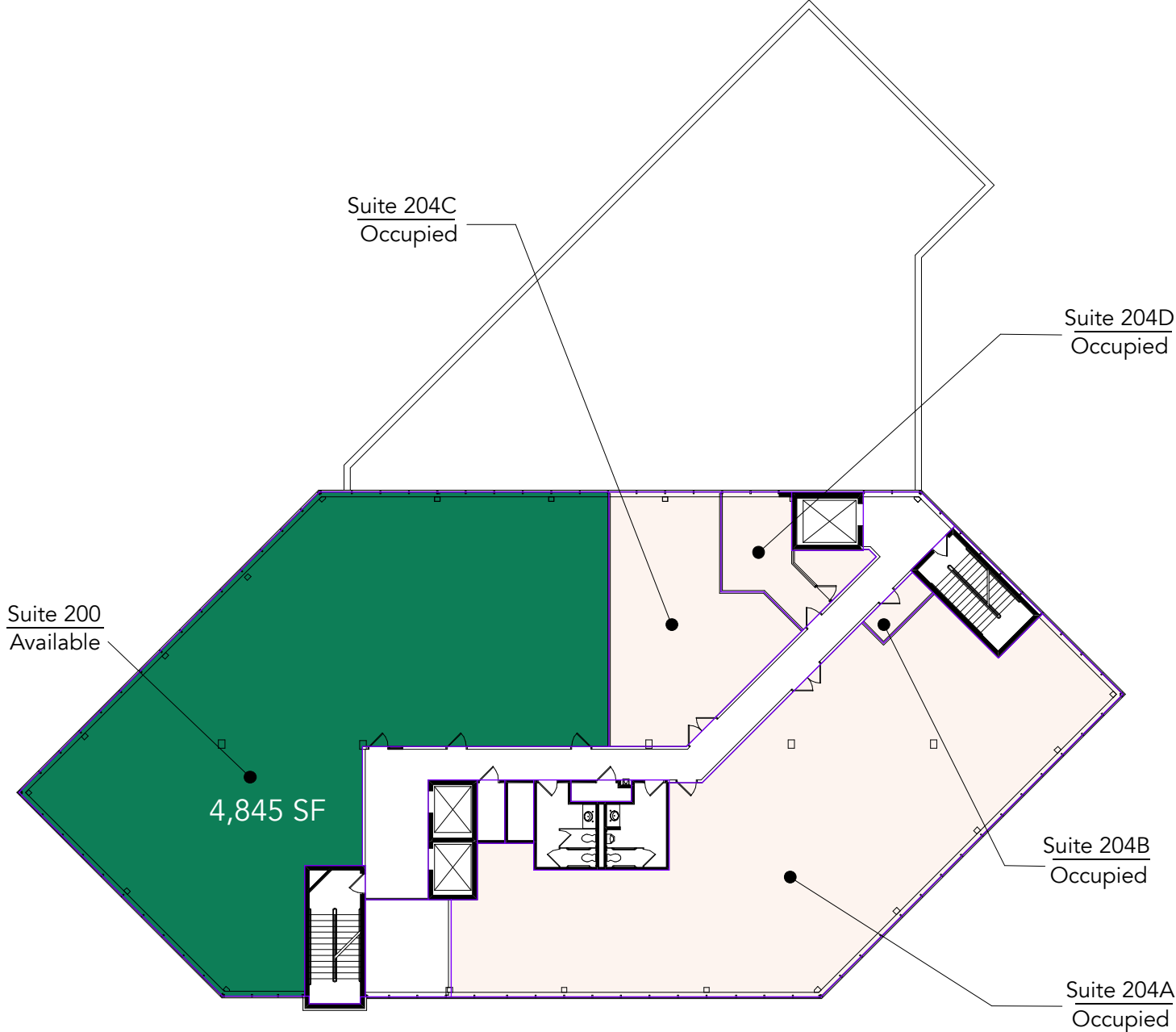
Floor Plan - Floor 1

- Building Common Areas
- Available Space
- Occupied Space



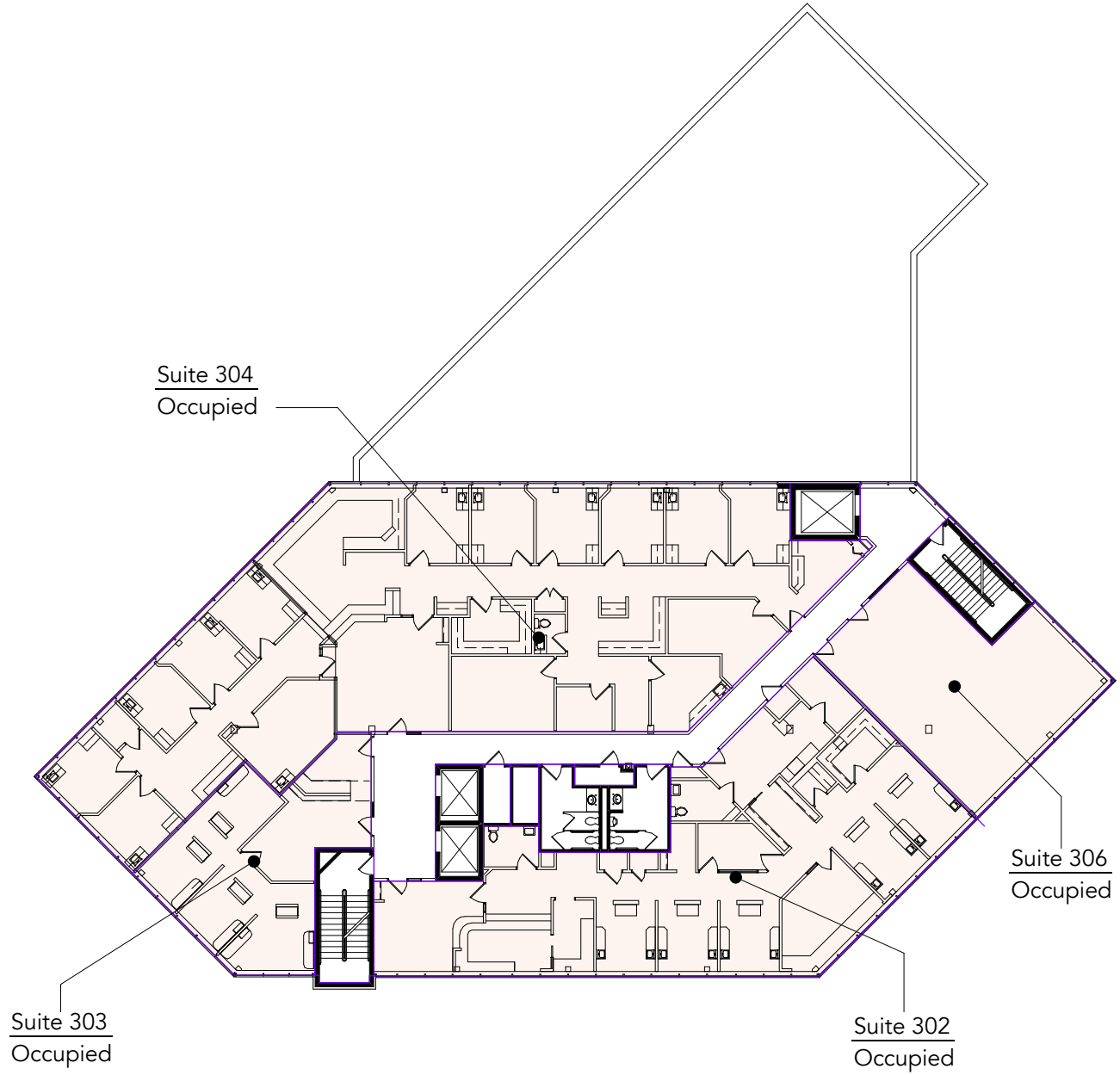
Floor Plan - Floor 2

- Building Common Areas
- Available Space
- Occupied Space

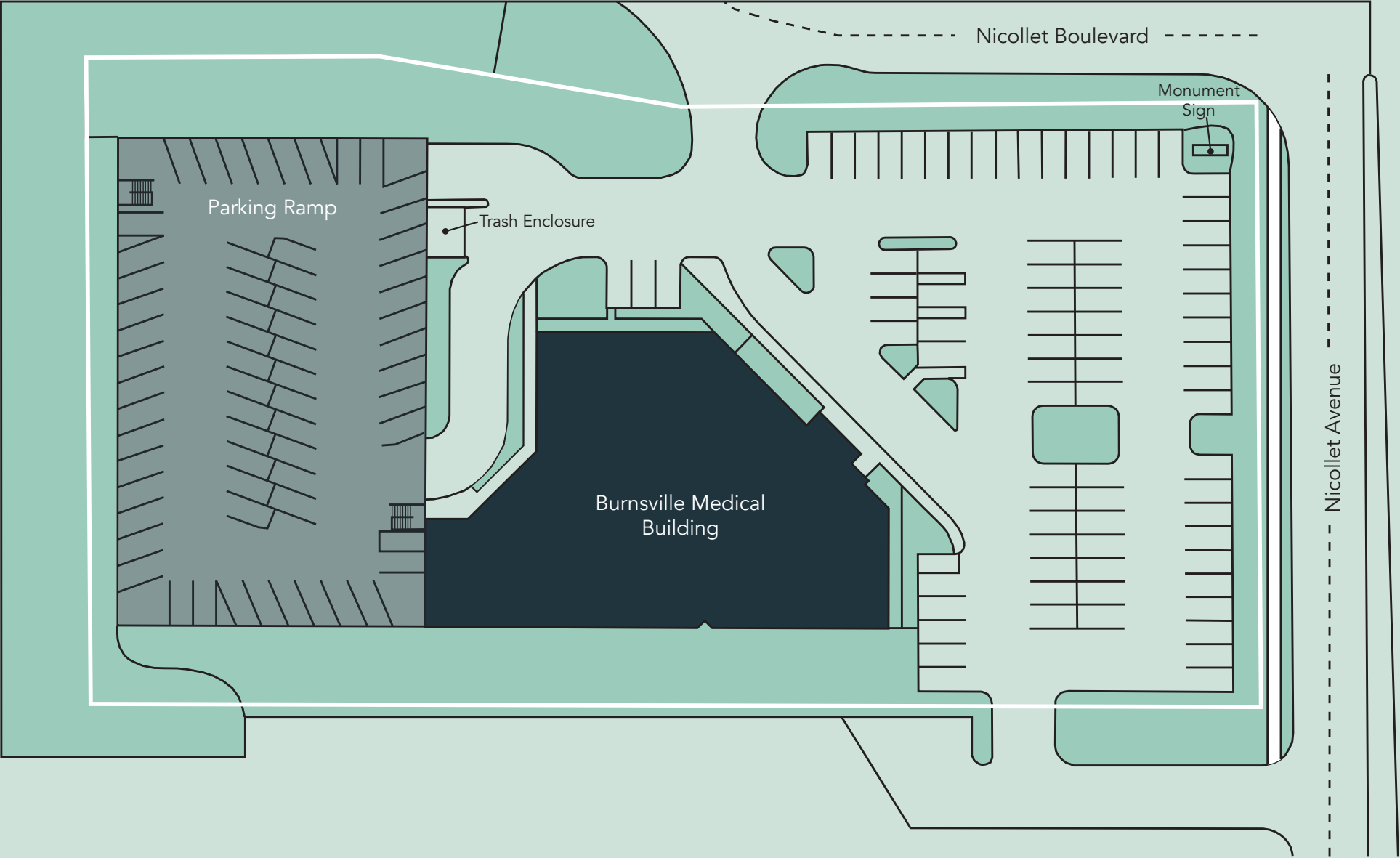


Floor Plan - Floor 3

- Building Common Areas
- Available Space
- Occupied Space



Site Plan



Neighborhood Context

Hot Spots

1. Burnsville Medical Center
2. M Health Fairview Ridges Hospital
3. Burnsville Center (1-million SF retail)
4. Civic Center Park Amphitheater
5. Burnsville Heart of the City
6. Buck Hill Skiing

Demographics	1 MILE	3 MILES	5 MILES
POPULATION	8,872	80,052	189,668
HOUSEHOLDS	3,671	31,058	71,906
AVG. INCOME	\$105,942	\$125,518	\$139,901





PROPERTY MANAGER
LEASING AGENT

Kori DeJong

651-999-5540

kdejong@wellingtonmgt.com

Burnsville Medical Center

14000 Nicollet Avenue
Burnsville, MN 55337



St. Paul-based Wellington Management, Inc. owns, manages and develops commercial and residential properties throughout the Twin Cities metro area. We work to make long-term community impact through careful district planning and neighborhood relationships.

Main (651) 292-9844
Fax (651) 292-0072
wellingtonmgt.com