

Chaska Plaza

3000 Hundertmark Road
Chaska, MN 55318

Ashley Urlick (Burdine)
651-999-5506
aurlick@wellingtonmgt.com



WELLINGTON
MANAGEMENT



Established retail center overlooking Hazeltine golf course.

Acquired by Wellington in 2016, Chaska Plaza is a single-story neighborhood retail and medical office building overlooking the picturesque Hazeltine National Golf Club course. The building is anchored by Goodwill, iSpine Pain Physicians and Fresenius Kidney Care.

Tenants and visitors enjoy a wide variety of walkable food options, including Pasta Zola, Sake Sushi, India Bar & Grill, Willy McCoys, Heartbreakers Bar & Grill, as well as quick options like Culver's and Quiznos. Other area amenities include Chaska Commons outlet mall, Super Target, Home Depot, Kohl's, Aldi and Cub Foods.

HIGHLIGHTS

- Prime location in a well-established retail center
- Located across from Hazeltine golf course
- Along a walking path
- Within close proximity to Chaska High School (2 minutes) and Chaska Community Center (6 minutes)
- One minute from the intersection of Highway 41 and Pioneer Trail
- 10-19' clear heights

Space Available

Owner, Developer, Manager, Leasing

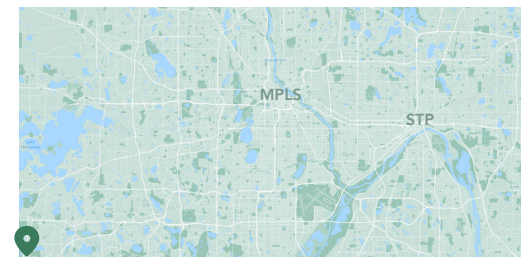
38,000 SF total; 15,003 SF available

267 surface stalls, 4.6 : 1,000 SF

Single-story retail, office & medical building

Built in 1998

Southwest Metro



Available Suites



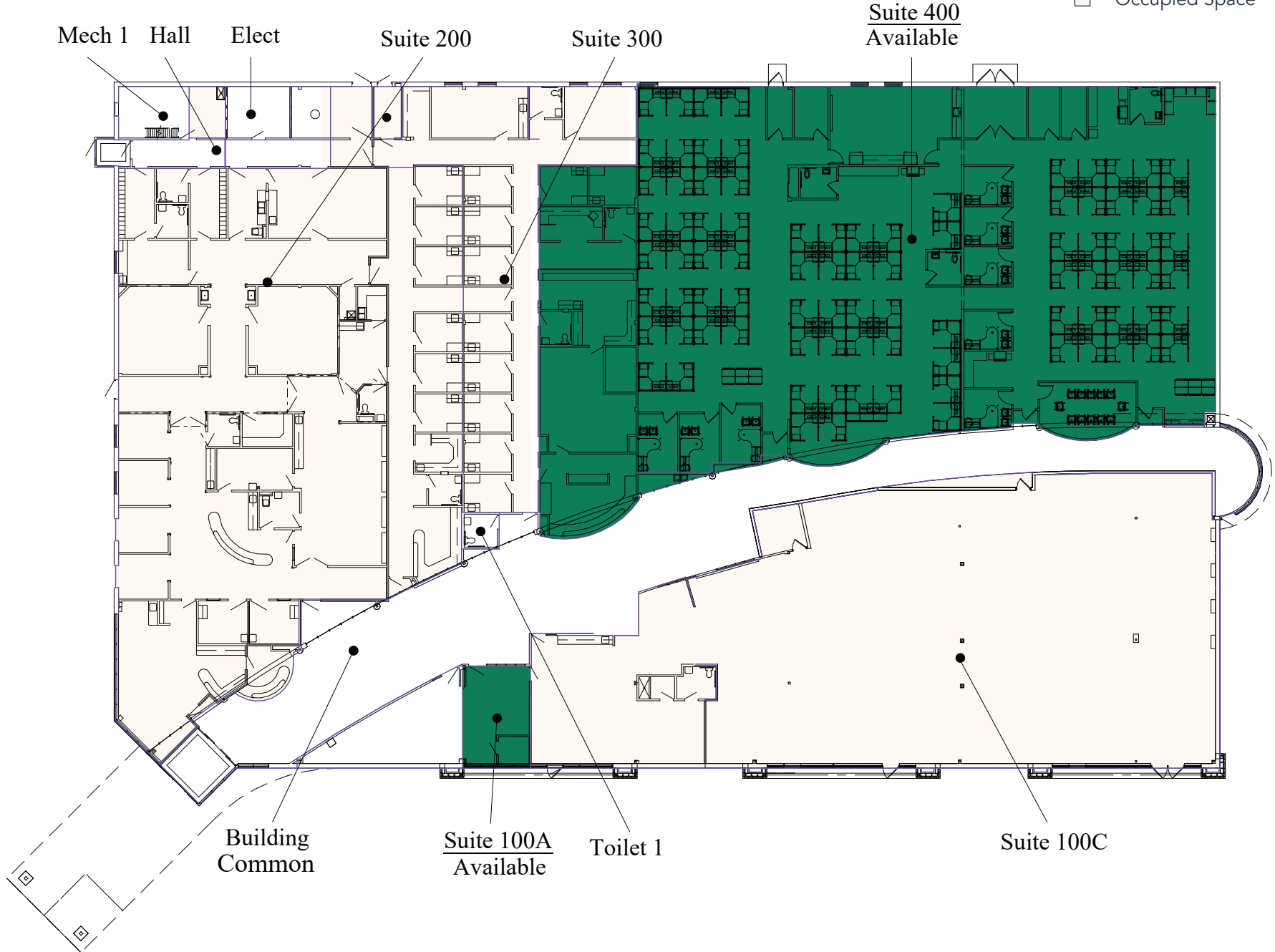
Suite 100A - 400 SF



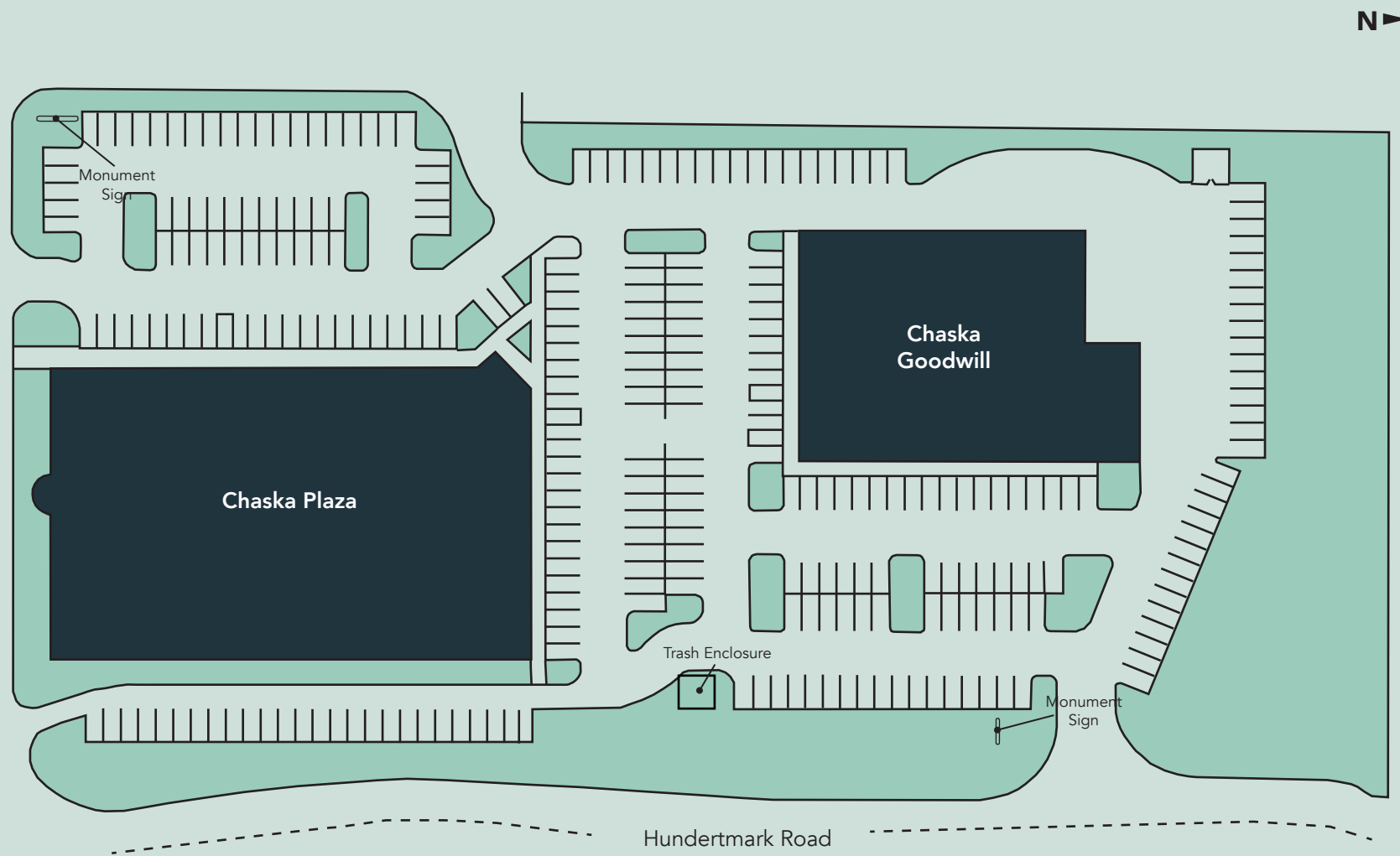
Suite 400 - 14,603 SF

Floor Plan

- Building Common Areas
- Available Space
- Occupied Space



Site Plan



The Neighborhood



Demographics

1 MILE AWAY

4,441 Population
2,253 Households
\$98,776 Avg. Income

3 MILES AWAY

38,654 Population
14,102 Households
\$159,895 Avg. Income

5 MILES AWAY

93,938 Population
34,414 Households
\$170,638 Avg. Income

Hot Spots

- | | | | |
|-------------------|--------------------|----------------------------------|-------------------------------|
| 1. Chaska Plaza | 5. Cub Foods | 9. Kohls | 13. McKnight Park |
| 2. The Home Deopt | 6. Target | 10. Aldi | 14. Lake Grace Park |
| 3. Caribou Coffee | 7. Kwik Trip | 11. The Loop at Chaska | 15. Chaska High School |
| 4. Perkins | 8. Anytime Fltness | 12. Hazeltine National Golf Club | 16. Two Twelve Medical Center |

Chaska Plaza

3000 Hundertmark Road
Chaska, MN 55318



PROPERTY MANAGER
LEASING AGENT

Ashley Urlick (Burdine)

651-999-5506
aurlick@wellingtonmgt.com



WELLINGTON
MANAGEMENT

St. Paul-based Wellington Management, Inc. owns, manages and develops commercial and residential properties throughout the Twin Cities metro area. We work to make long-term community impact through careful district planning and neighborhood relationships.

Main (651) 292-9844
Fax (651) 292-0072
wellingtonmgt.com

Wellington Management © 2021 All rights reserved.