

# Chaska Plaza

3000 Hundertmark Road  
Chaska, MN 55318

Ashley Urlick  
651-999-5506  
[aurlick@wellingtonmgt.com](mailto:aurlick@wellingtonmgt.com)



**WELLINGTON**  
MANAGEMENT





## Established retail center overlooking Hazeltine golf course.

Acquired by Wellington in 2016, Chaska Plaza is a single-story neighborhood retail and medical office building overlooking the picturesque Hazeltine National Golf Club course. The building is anchored by Goodwill, iSpine Pain Physicians and Fresenius Kidney Care.

Tenants and visitors enjoy a wide variety of walkable food options, including Pasta Zola, Sake Sushi, India Bar & Grill, Willy McCoys, Heartbreakers Bar & Grill, as well as quick options like Culver's and Quiznos. Other area amenities include Chaska Commons outlet mall, Super Target, Home Depot, Kohl's, Aldi and Cub Foods.

## HIGHLIGHTS

- Prime location in a well-established retail center
- Located across from Hazeltine golf course
- Along a walking path
- Within close proximity to Chaska High School (2 minutes) and Chaska Community Center (6 minutes)
- One minute from the intersection of Highway 41 and Pioneer Trail
- 10-19' clear heights

## Space Available

Owner, Developer, Manager, Leasing

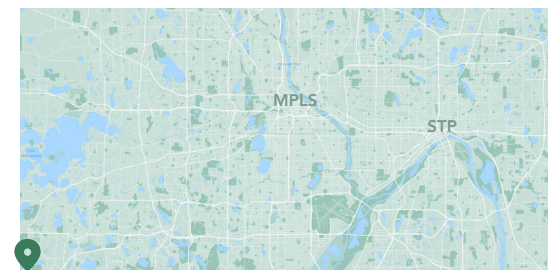
38,000 SF total; 15,003 SF available

267 surface stalls, 4.6 : 1,000 SF

Single-story retail, office & medical building

Built in 1998

Southwest Metro



# Available Suites



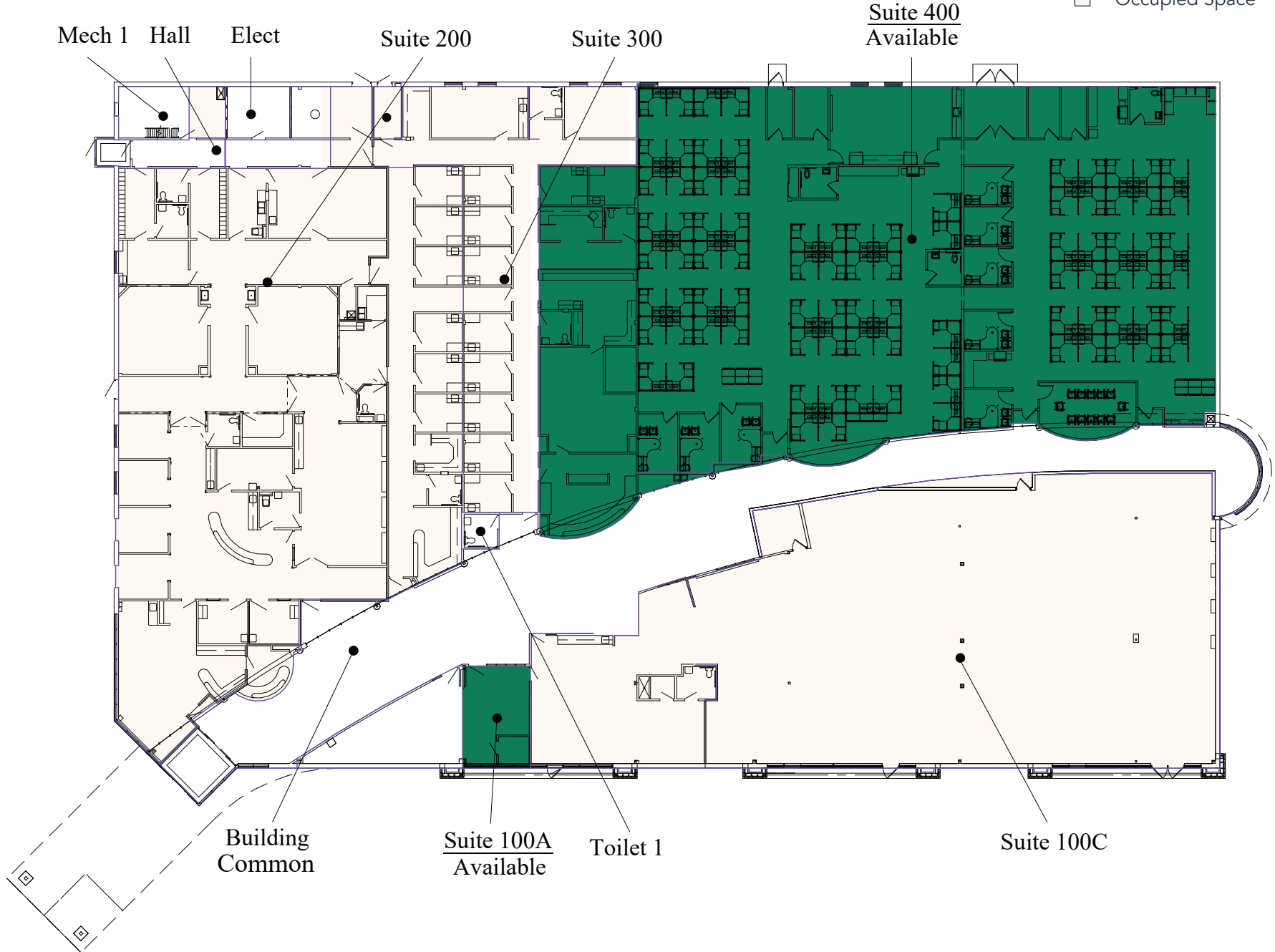
**Suite 100A - 400 SF**



**Suite 400 - 14,603 SF**

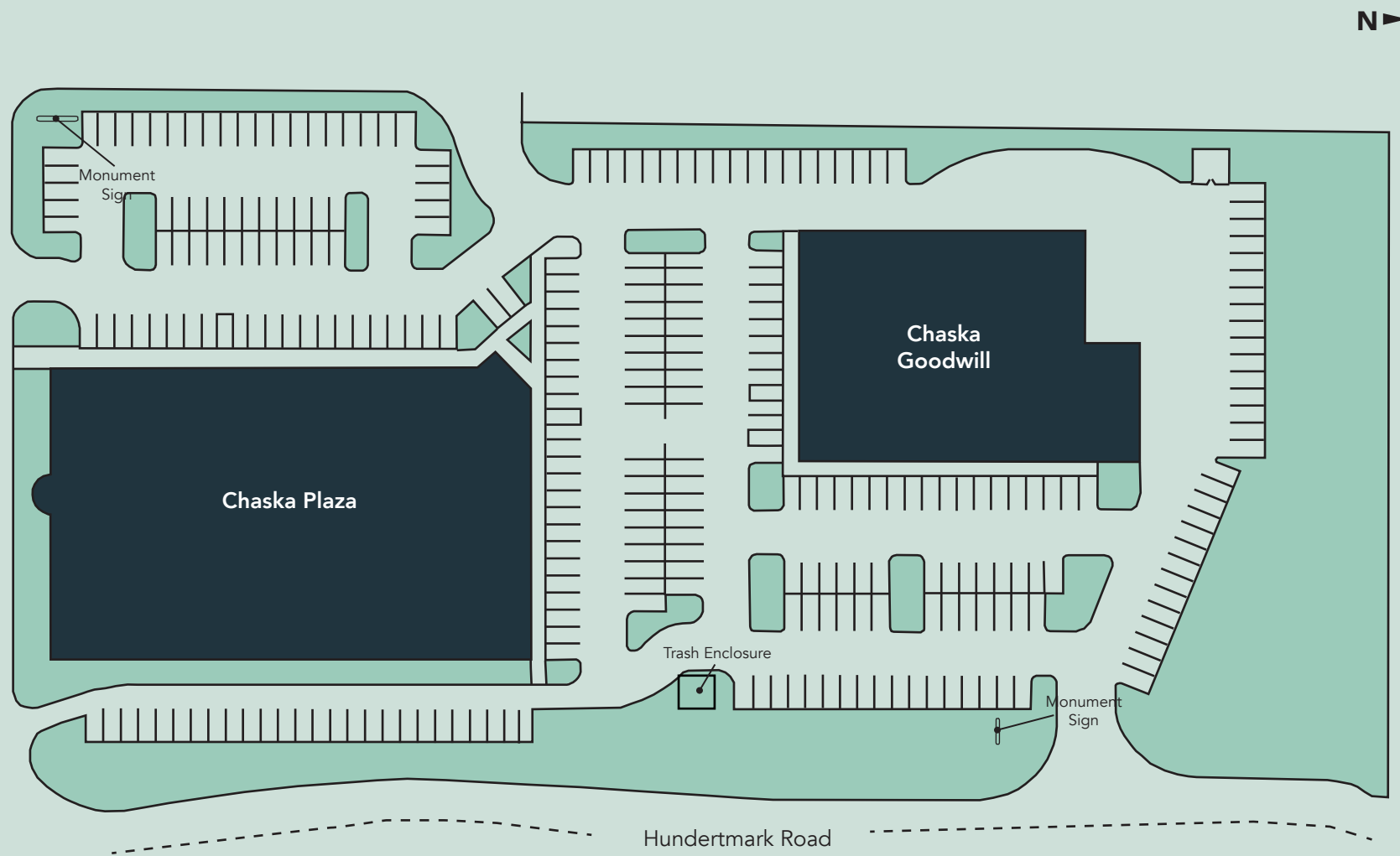
# Floor Plan

- Building Common Areas
- Available Space
- Occupied Space





# Site Plan



# The Neighborhood



## Demographics

### 1 MILE AWAY

4,386 Population  
2,277 Households  
\$102,502 Avg. Income

### 3 MILES AWAY

39,200 Population  
14,717 Households  
\$167,926 Avg. Income

### 5 MILES AWAY

96,406 Population  
35,689 Households  
\$173,093 Avg. Income

## Hot Spots

- |                   |                    |                                  |                               |
|-------------------|--------------------|----------------------------------|-------------------------------|
| 1. Chaska Plaza   | 5. Cub Foods       | 9. Kohls                         | 13. McKnight Park             |
| 2. The Home Deopt | 6. Target          | 10. Aldi                         | 14. Lake Grace Park           |
| 3. Caribou Coffee | 7. Kwik Trip       | 11. The Loop at Chaska           | 15. Chaska High School        |
| 4. Perkins        | 8. Anytime Fltness | 12. Hazeltine National Golf Club | 16. Two Twelve Medical Center |

# Chaska Plaza

3000 Hundertmark Road  
Chaska, MN 55318



PROPERTY MANAGER  
LEASING AGENT

Ashley Urlick

651-999-5506  
[aurlick@wellingtonmgt.com](mailto:aurlick@wellingtonmgt.com)



**WELLINGTON**  
MANAGEMENT

St. Paul-based Wellington Management, Inc. owns, manages and develops commercial and residential properties throughout the Twin Cities metro area. We work to make long-term community impact through careful district planning and neighborhood relationships.

Main (651) 292-9844  
Fax (651) 292-0072  
[wellingtonmgt.com](http://wellingtonmgt.com)

Wellington Management © 2021 All rights reserved.