



WELLINGTON
MANAGEMENT

Drake Building

60 Plato Boulevard
St. Paul, MN 55107

Kori DeJong
651-999-5540
kdejong@wellingtonmgt.com





A piece of St. Paul history houses inspiring office space.

The Drake Marble Building was constructed in the early 1900s to serve as a marble cutting and polishing plant on St. Paul's West Side, just across the Mississippi River from the Central Business District. Wellington renovated the Drake Building a century later, converting it into one of the most unique office spaces St. Paul has to offer. Drake Bank opened in the newly repositioned building in 2002, becoming the first chartered bank to open in the city in more than four decades.

Much of the distinctive historic character of this four-story building has been carefully retained. A massive lightwell brings the common areas of all four floors together, and the south side of the building features a patio using original Plato Boulevard cobblestone street pavers.

HIGHLIGHTS

- Winner of the St. Paul Heritage Preservation Award
- Exposed concrete structure with high open ceilings
- Beautiful landscaping with plantings, patio and picnic tables
- Within five minutes of Downtown St. Paul and the St. Paul Downtown Airport
- Operable windows on floors 2-4
- Ample natural light and striking views of downtown
- Cherokee Regional Park, Robert Piram Regional Trail and Harriet Island Regional Trail accessible from Plato Boulevard
- Highly visible pylon sign
- Free parking

Space Available

Owner, Developer, Manager, Leasing

82,000 SF office; 16,643 SF available

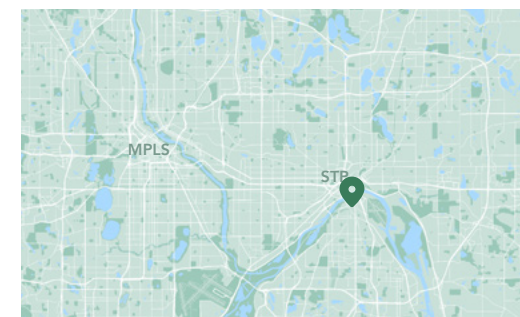
377 surface stalls, 4.6 : 1,000 SF

4-story office building

10'-17' clear height

Built in early 1900s, renovated in 2002

West Side Neighborhood



Available Suites



Suite 140 - 4,330 SF [3D Tour](#)



Suite 230 - 2,846 SF



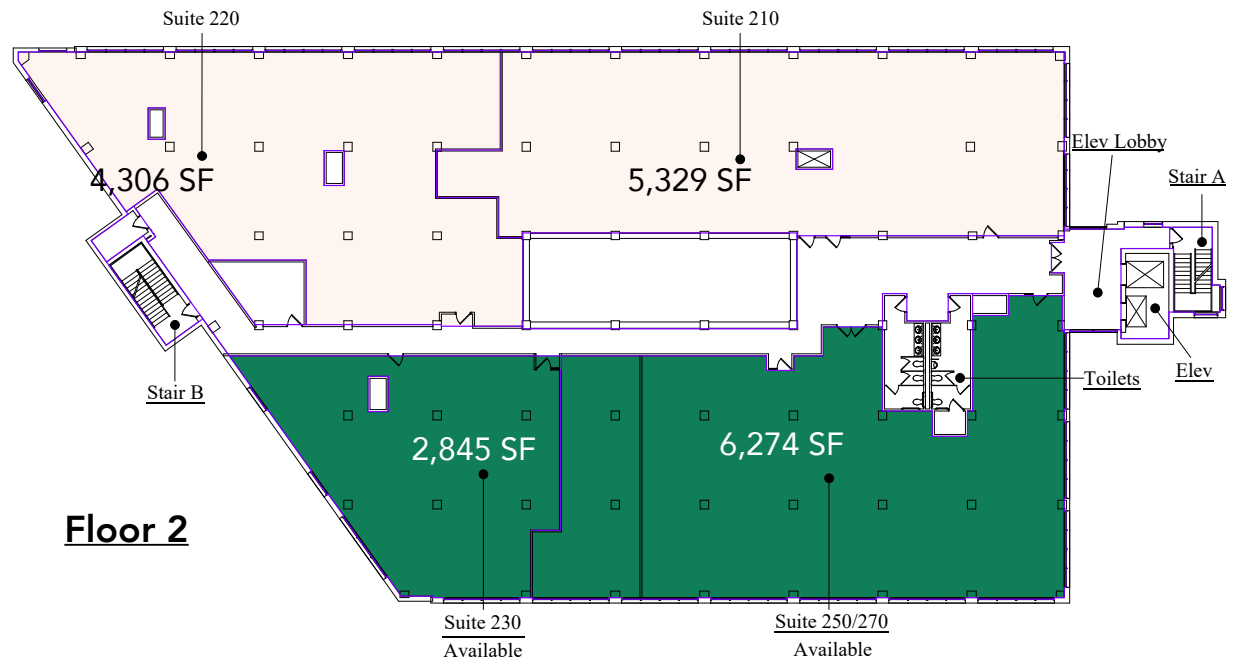
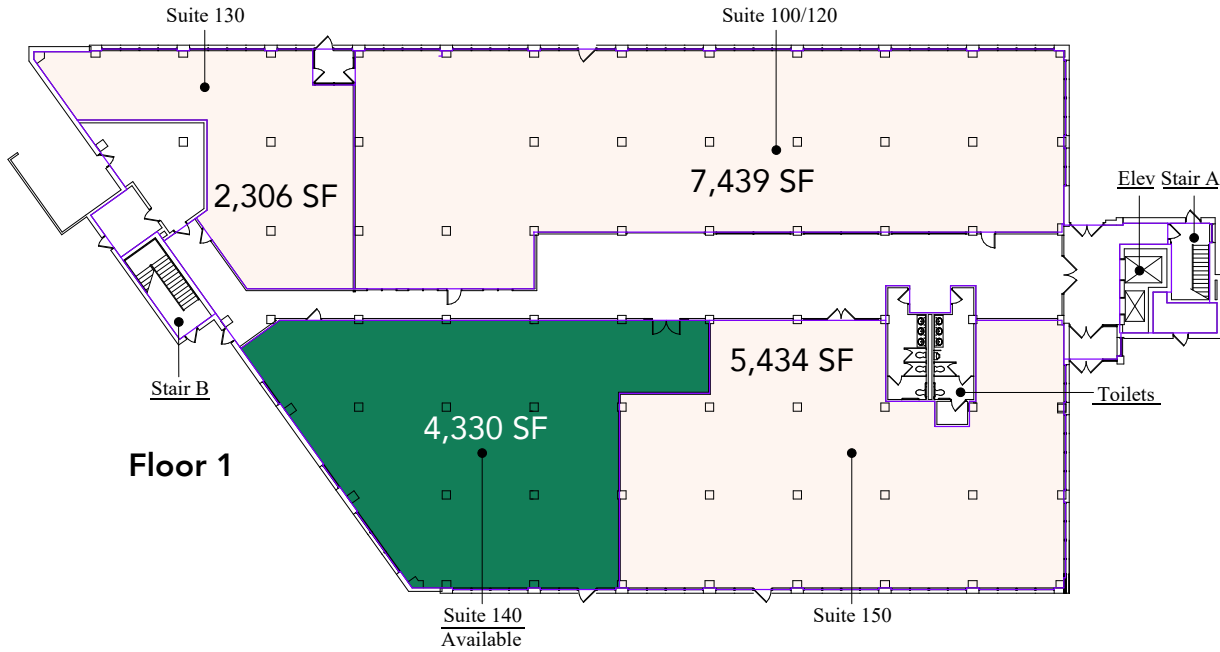
Suite 250-270 - 6,274 SF



Suite 320 - 3,193 SF [3D Tour](#)

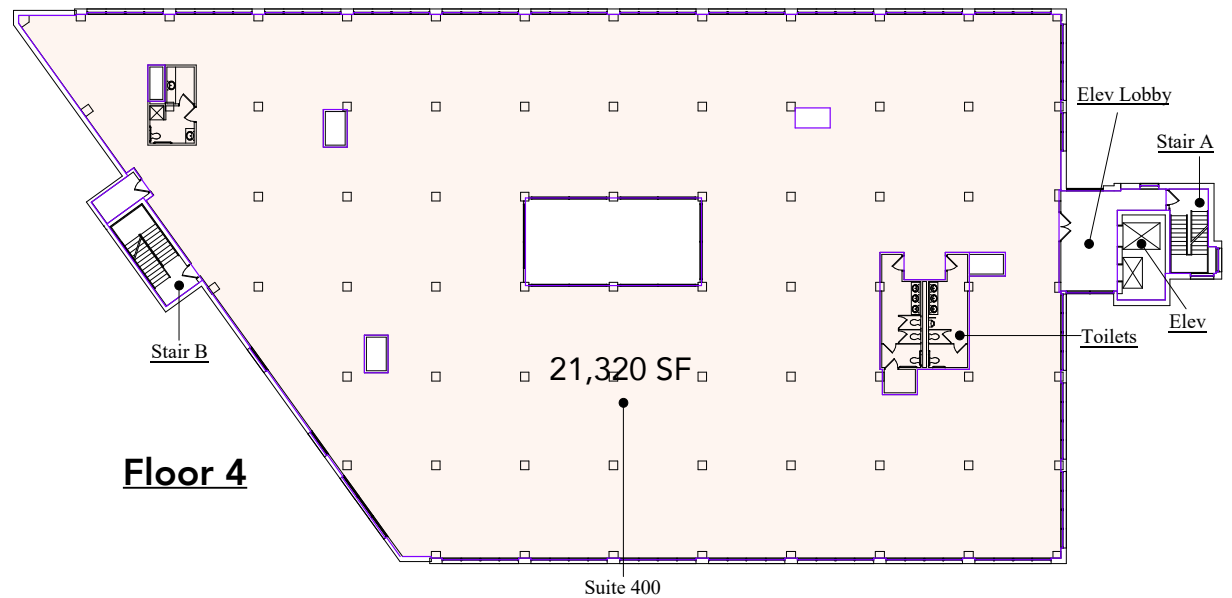
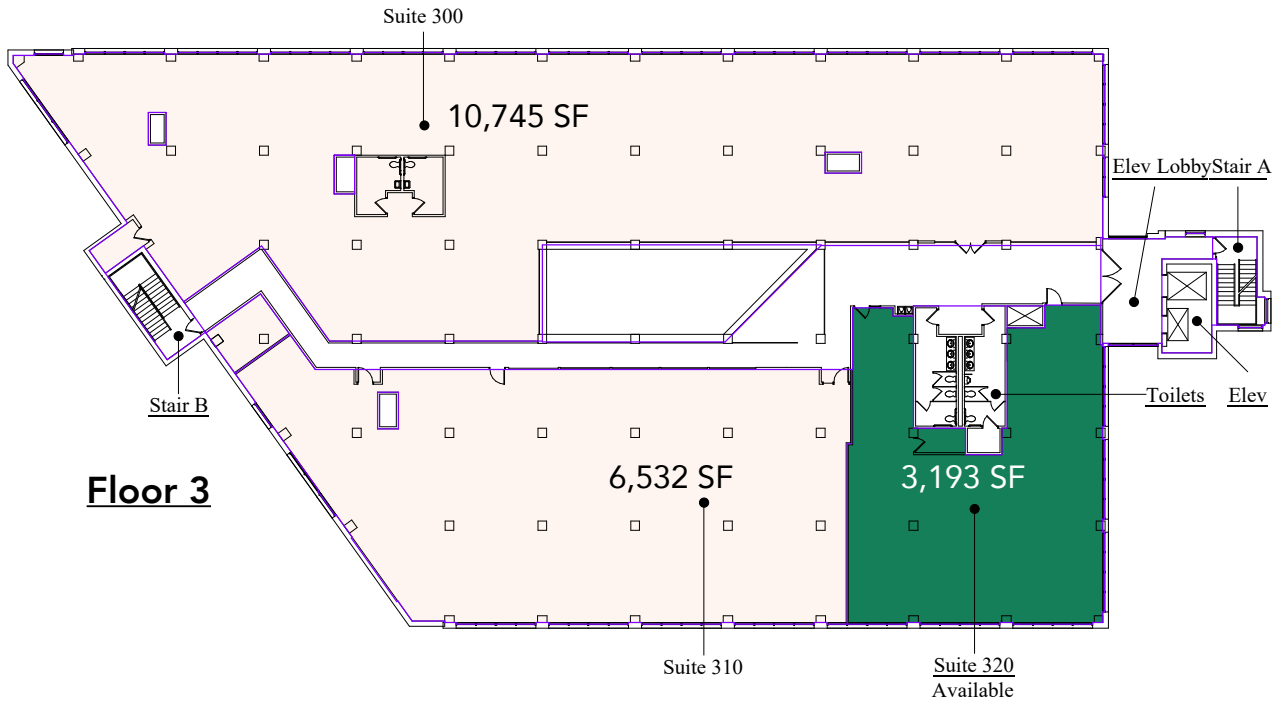
Floor Plans

- Building Common Areas
- Available Space
- Occupied Space

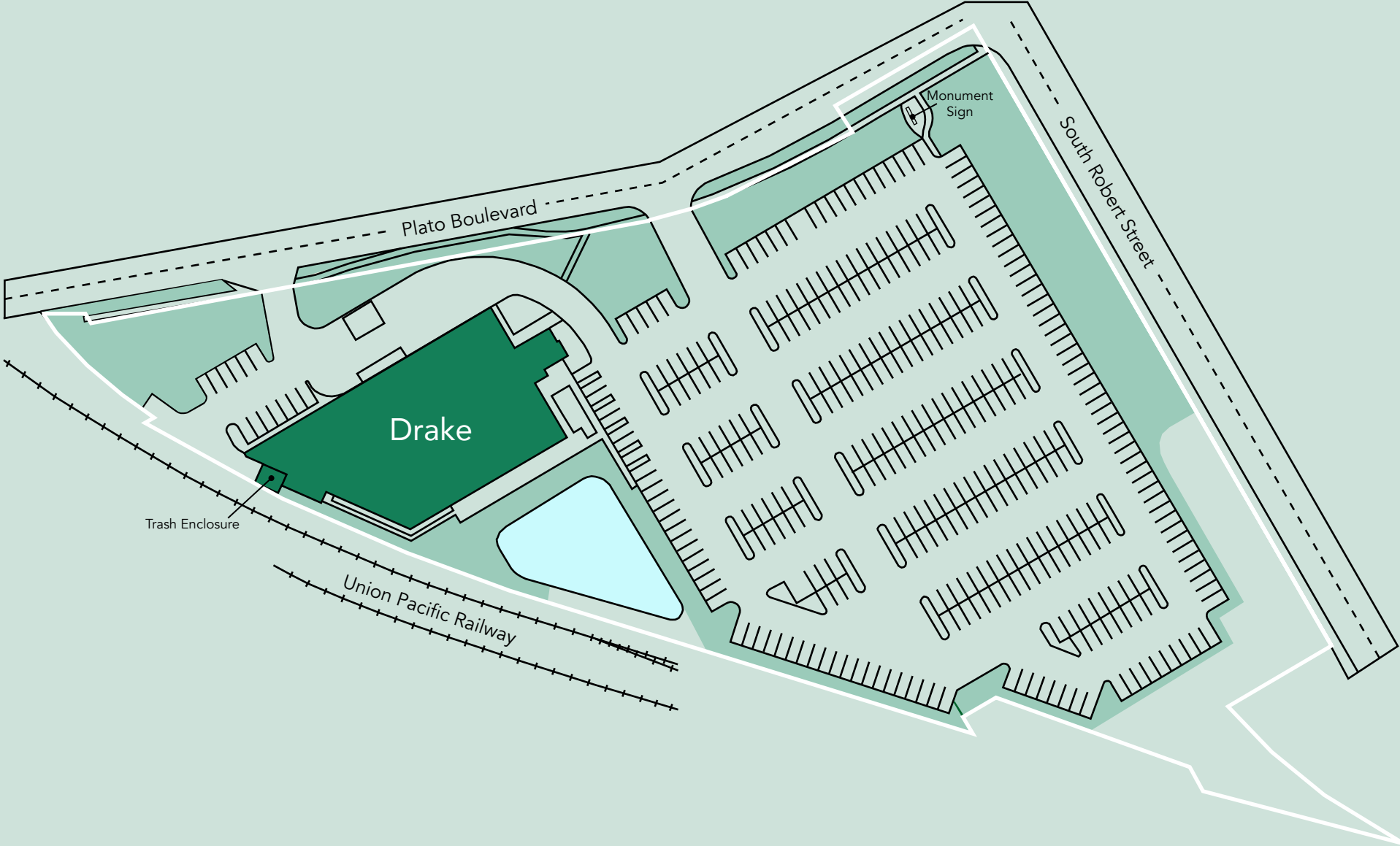


Floor Plans

- Building Common Areas
- Available Space
- Occupied Space

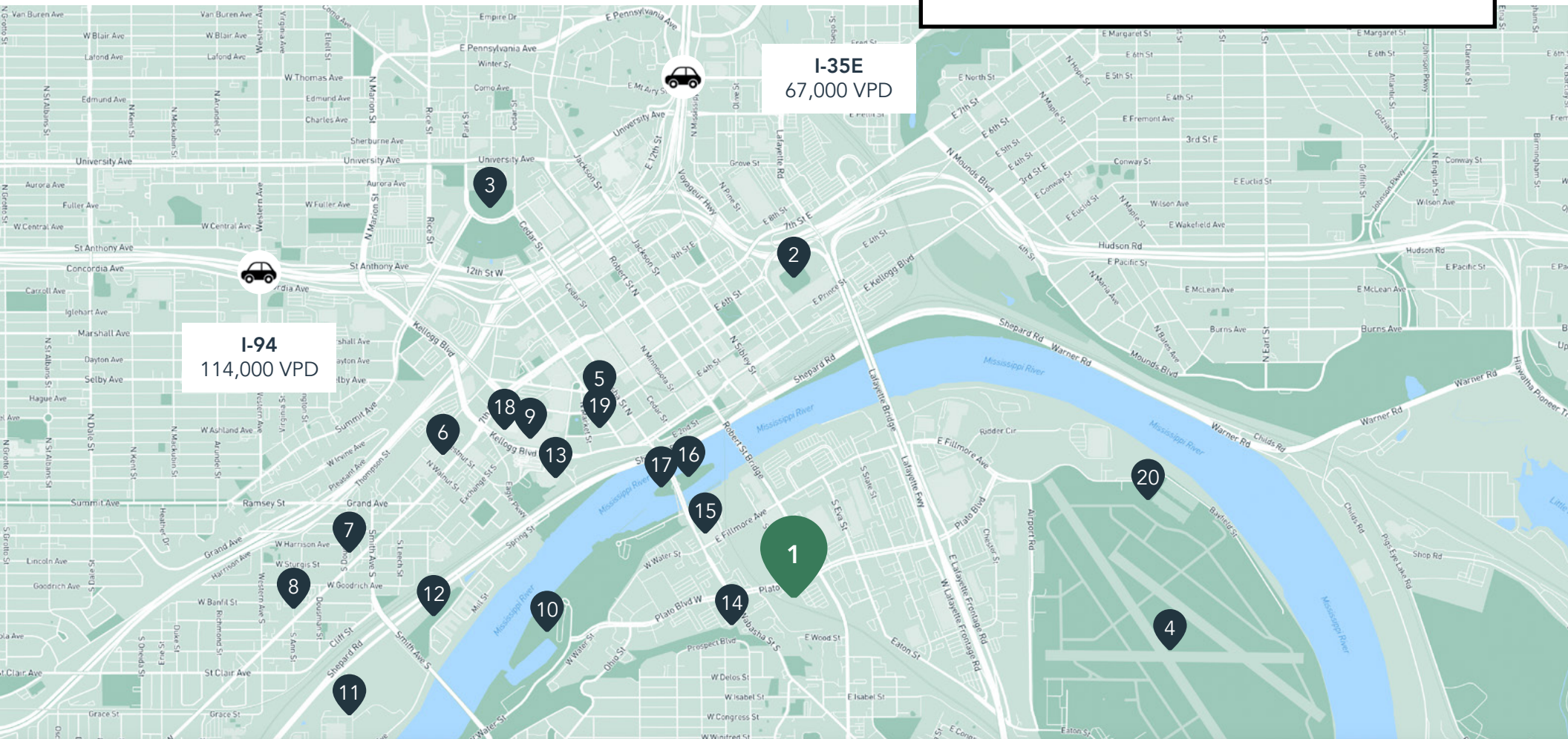


Site Plan



The Neighborhood

Demographics	1 MILE	3 MILES	5 MILES
POPULATION	18,927	149,409	362,909
HOUSEHOLDS	9,452	57,931	140,937
AVG. INCOME	\$102,279	\$98,594	\$103,505



Hot Spots

- | | | | |
|---------------------------------|--|--------------------------|--------------------------------|
| 1. Drake Building | 7. DeGidio's | 12. High Bridge Dog Park | 18. Grand Casino Arena |
| 2. CHS Field | 8. Mancini's Char House | 13. Science Museum | 19. The St. Paul Hotel & Grill |
| 3. Minnesota State Capitol | 9. Saint Paul RiverCentre | 14. Holiday Gas Station | 20. Holman's Table |
| 4. St. Paul Downtown Airport | 10. Harriet Island Regional Park | 15. Starbucks | |
| 5. Kincaid's Fish, Chop & Steak | 11. Mississippi National River & Recreation Area | 16. Raspberry Island | |
| 6. Cossetta | | 17. Minnesota Boat Club | |

Drake Building

60 Plato Boulevard
St. Paul, MN 55107



PROPERTY MANAGER
LEASING AGENT
Kori DeJong

651-999-5540
kdejong@wellingtonmgt.com



St. Paul-based Wellington Management, Inc. owns, manages and develops commercial and residential properties throughout the Twin Cities metro area. We work to make long-term community impact through careful district planning and neighborhood relationships.

Main (651) 292-9844
Fax (651) 292-0072
wellingtonmgt.com