




2615 EAST 29TH STREET - MINNEAPOLIS, MN 55406 - EVERLAKEMPLS.COM

EVERLAKE

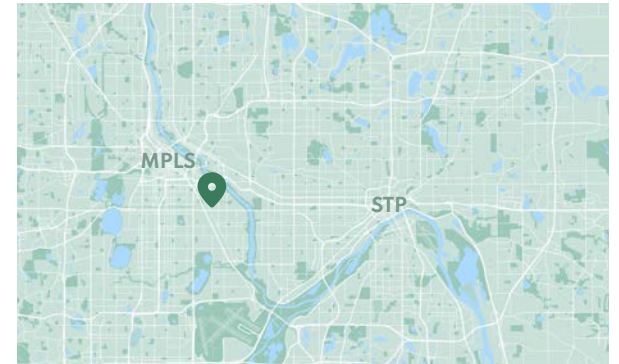
Developed & managed by  **WELLINGTON**
MANAGEMENT

ALWAYS MINNEAPOLIS, EVERLAKE

Everlake is Longfellow's newest apartment community, consisting of modern studios, alcoves, one- and two-bedrooms, beautiful amenity spaces and first-floor neighborhood retail within a dynamic urban center. Residents can enjoy a minimalist lifestyle with little need for a car and all the entertainment amenities Lake Street has to offer just a walk or bike ride away. The apartment community is adjacent to an Aldi grocery store, Wells Fargo, Wendy's, a neighborhood restaurant and a K-8 charter school, with Target and Cub across the street.

HIGHLIGHTS

- Beautiful studio, alcove, one- and two-bedroom apartments
- Rooftop lounge and deck with grill stations and fire pit
- Second-floor cafe that opens into a patio
- Pet spa, fitness and yoga studios, bike lounge with repair station, secured room for oversized packages
- Walkability to Lake Street/Midtown station along Metro Transit's Blue Line light rail
- Adjacent to Aldi, small-shop retail and a charter school, Target and Cub Foods across the street



AMENITIES



Rooftop deck with grill stations & fire pit

AMENITIES



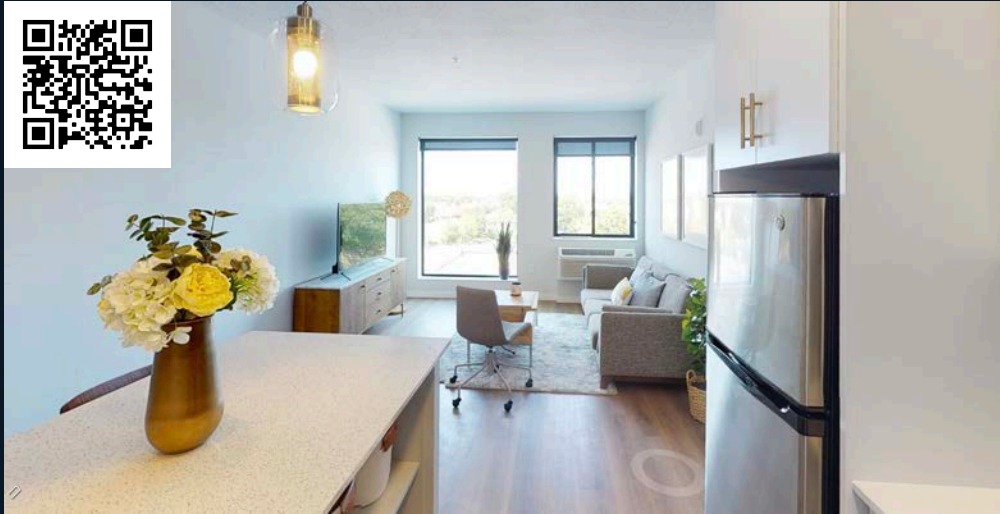
Rooftop lounge

Lobby



THE APARTMENT HOMES

1-Bedroom



More
Floor Plans



2-Bedroom



NEIGHBORHOOD CONTEXT

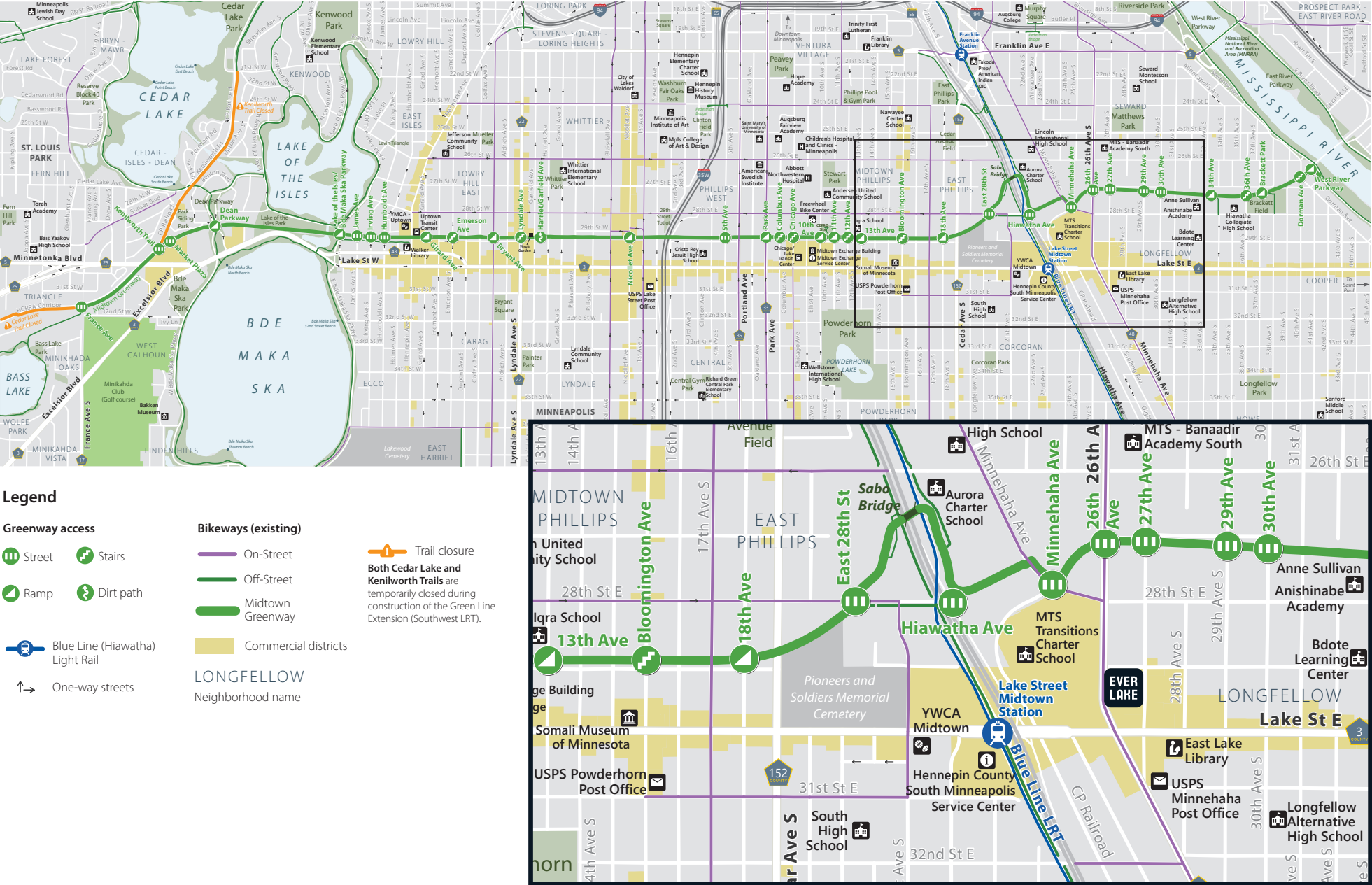
1. Everlake
2. Lake Street/Midtown LRT station
3. South High School
4. Universal Academy
5. Midtown Greenway
6. Quruxley Restaurant
7. Schooner Tavern
8. Albeiter Brewing
9. Moon Palace Books
10. The Hub Bike Co-op
11. East Lake Library



BIKING MIDTOWN GREENWAY

Welcome to the Midtown Greenway

The Midtown Greenway is a 6 mile multi-use trail in a historic railroad trench linking parks, trails, businesses, and cultural destinations between the Mississippi River and the Chain of Lakes. The trail runs parallel to nearby Lake Street, a home to arts and cultural organizations, major institutions, and a diverse community of small local businesses.



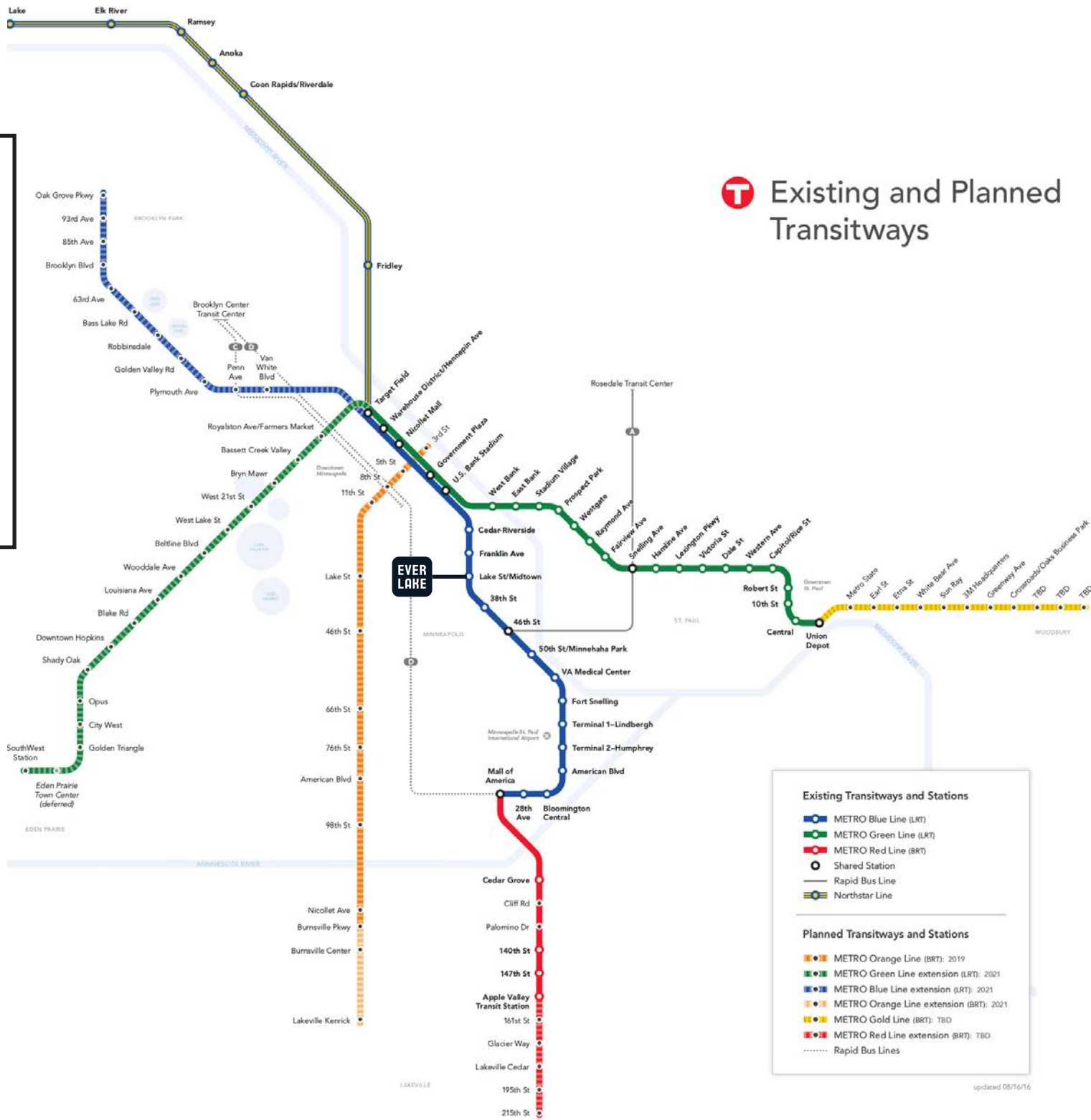
Map from midtowngreenway.org

RIDING METRO TRANSIT

On the route:

- 1. Target Field
- 2. Nicollet Mall
- 3. Downtown Minneapolis
- 4. U.S. Bank Stadium
- 5. University of Minnesota
- 6. Huntington Stadium
- 7. Downtown St. Paul
- 8. Lake Street
- 9. MSP International Airport
- 10. Mall of America

Existing and Planned Transitways



ABOUT WELLINGTON MANAGEMENT

4M SF

PORTFOLIO

100

BUILDINGS

600+

COMMERCIAL TENANTS

40

NON-PROFIT TENANTS

915

URBAN HOMES

40+

DEVELOPMENTS

Honoring the Real Bottom Line

We are collaborative partners to small businesses, entrepreneurs, elected officials, communities and neighborhoods, but ultimately, we are stewards of important community assets. We work here, we live here, and we exist to make lasting community impact well beyond the buildings.

6

DISTRICT PLANS (4 IN PROGRESS)

100%

INVESTED IN THE MSP 7-COUNTY METRO



Everlake

2615 East 29th Street
Minneapolis, MN 55406



WELLINGTON
MANAGEMENT

St. Paul-based Wellington Management, Inc. owns, manages and develops commercial and residential properties throughout the Twin Cities metro area with an eye to district planning and long-term community impact.

(612) 895-3230
everlake@wellingtonmgt.com
everlakempls.com

Wellington Management © 2021 All rights reserved.