



2901 - 2911 26TH AVENUE SOUTH - MINNEAPOLIS, MN 55406

# EVERLAKE

Developed & managed by



**WELLINGTON**  
MANAGEMENT

## ALWAYS MINNEAPOLIS, EVERLAKE

Everlake is Longfellow's newest multifamily community, consisting of modern apartments, beautiful amenity spaces and first-floor neighborhood retail within a dynamic urban center. As Phase 3 of Wellington's transit-oriented Minnehaha Crossing development, Everlake adds 189 apartments and additional demisable retail to the six-acre former Rainbow Foods site that also includes an Aldi grocery store, Wells Fargo, Wendy's, a neighborhood restaurant and a K-8 charter school. A future phase will include a smaller residential project.

### HIGHLIGHTS

- 189-unit apartment community on upper five floors
- Walkability to Lake Street/Midtown station along Metro Transit's Blue Line light rail
- Immediately adjacent to Aldi, small-shop retail and a charter school
- Across the street, anchors Target and Cub Foods draw a large consumer base

### Fully Occupied

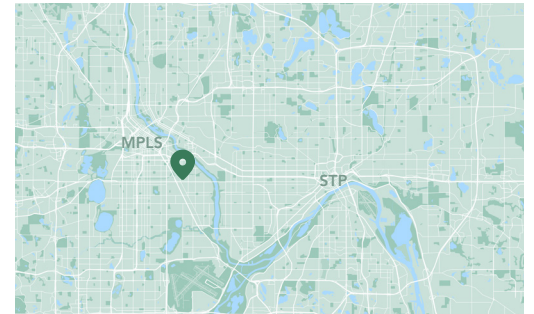
Owner, Developer, Manager, Leasing

Surface parking, 4 : 1,000 SF

1 story retail, 5 stories residential

13'5" clear height

Longfellow Neighborhood

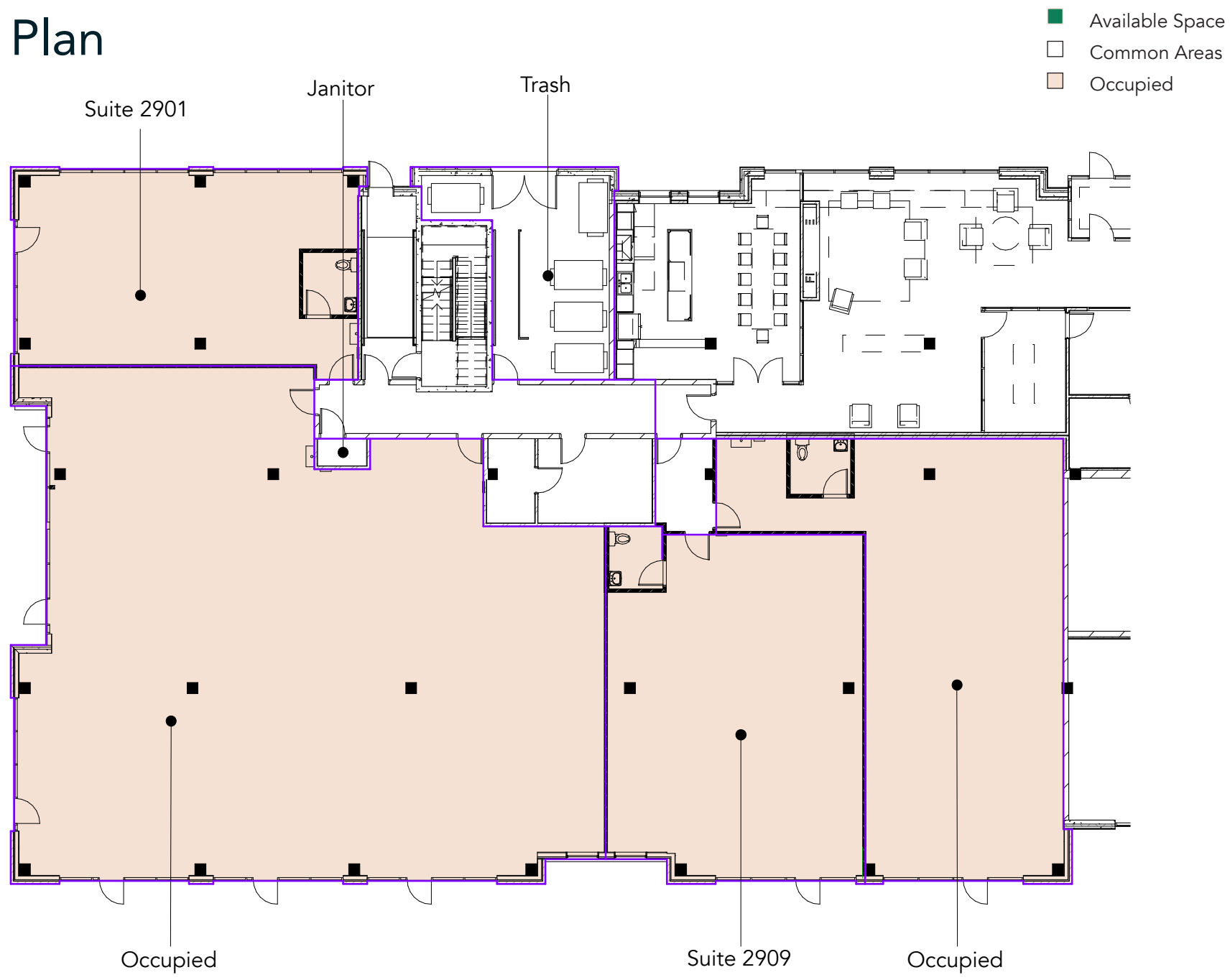


SITE PLAN

■ Opportunity



# Floor Plan



# NEIGHBORHOOD CONTEXT

## Hot Spots

1. Everlake Retail
2. Lake Street/Midtown LRT station
3. South High School
4. Universal Academy
5. Midtown Greenway
6. Quruxley Restaurant
7. Schooner Tavern
8. Albeiter Brewing
9. Moon Palace Books
10. The Hub Bike Co-op
11. East Lake Library
12. Multifamily housing

## Demographics

	1 MILE	3 MILES	5 MILES
POPULATION	30,748	266,388	513,898
HOUSEHOLDS	11,146	120,497	228,549
AVG. INCOME	\$98,275	\$113,474	\$127,842



# Everlake Retail

2901 - 2911 26th Avenue South  
Minneapolis, MN 55406

PROPERTY MANAGER  
& LEASING AGENT

Justin Bryant

651-999-5548

[jbryant@wellingtonmgt.com](mailto:jbryant@wellingtonmgt.com)



**WELLINGTON**  
MANAGEMENT

St. Paul-based Wellington Management, Inc. owns, manages and develops commercial and residential properties throughout the Twin Cities metro area with an eye to district planning and long-term community impact.

Main (651) 292-9844  
Fax (651) 292-0072  
[wellingtonmgt.com](http://wellingtonmgt.com)

Wellington Management © 2021 All rights reserved.