

Minnesota Office Plaza

1500 West Highway 36
Roseville, MN 55113

Eric Olsen
651-999-5539
eolsen@wellingtonmgt.com





Space Available

Owner, Manager, Leasing

197,101 SF office building

197,101 SF available

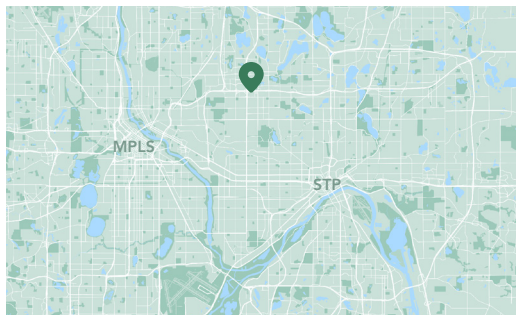
817 surface stalls, 4.1 : 1,000 SF

1- and 2-story office building

13' clear height

Immediately south of Rosedale Center

North Metro



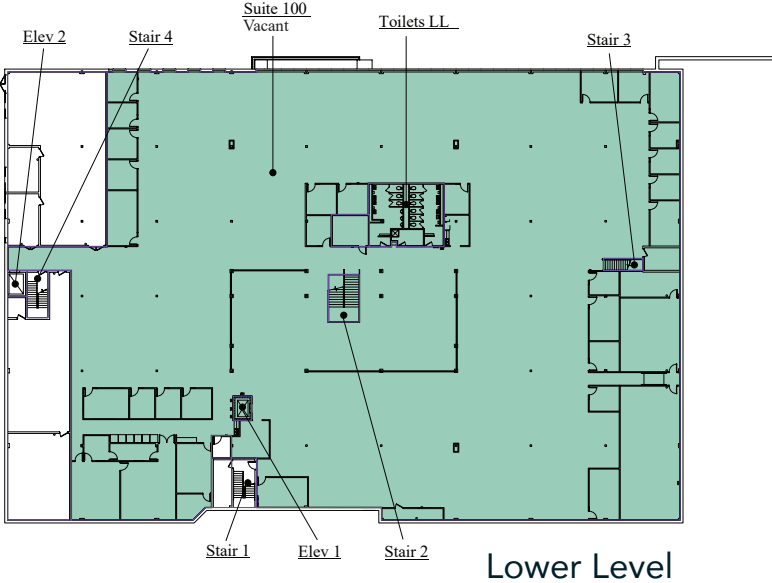
Centrally located office space with conference center and ample opportunities.

Minnesota Office Plaza is an expansive office and conference center with prime visibility that occupies 14 acres in a prominent location adjacent to Target, immediately south of Highway 36 and east of Snelling Avenue. Imagination is the only limit on this large site with docks, shipping, storage, assembly, meetings rooms, conference rooms, atrium, and open floor areas. Tenants and visitors enjoy the well-maintained building with skylights, easy access, and extensive surface parking adjacent to strong retail activity.

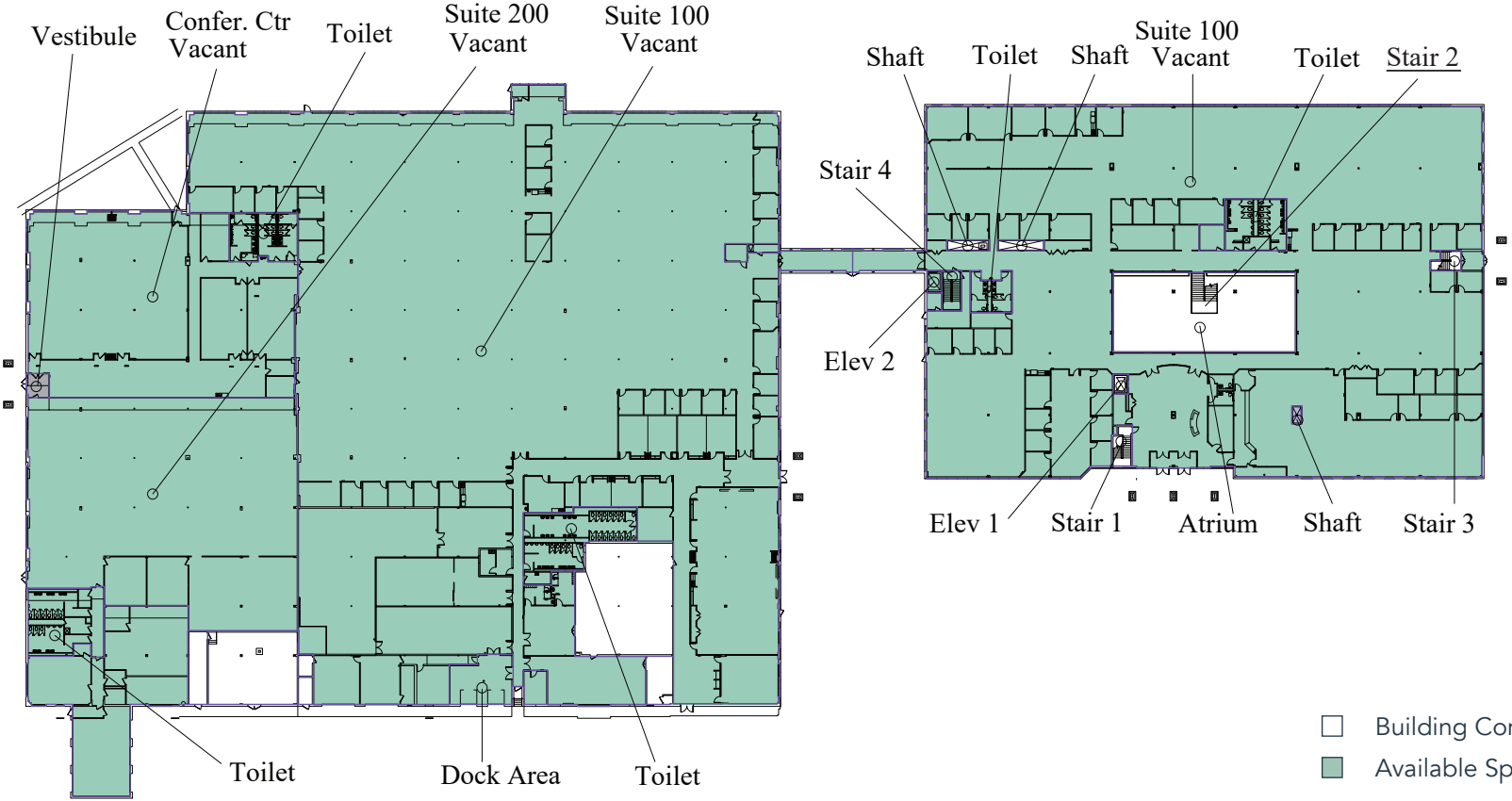
HIGHLIGHTS

- Highly visible on Highway 36 (77,000 VPD) and Snelling (46,000 VPN)
- Conveniently located adjacent to Target with direct access to site from a Highway 36 exit
- Close to HarMar Mall (2-minute drive) and Rosedale Center (5-minute drive)
- Exceptional access to a wide array of restaurants and amenities
- 12,000 SF conference center
- Open, two-story atrium (30 ft) with skylights
- Large garage space with three double-sided drive-in dock doors
- 12' clear height

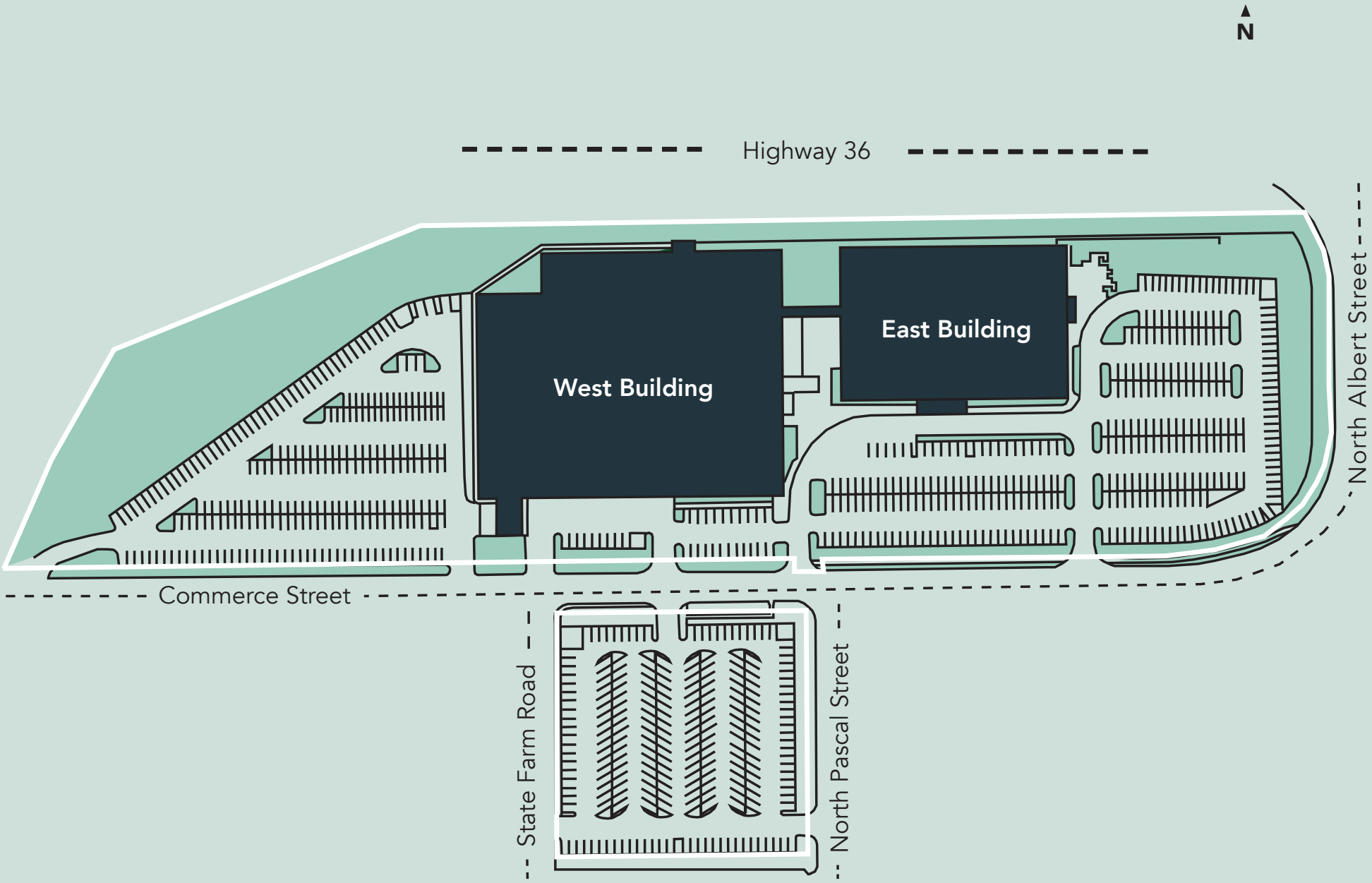
Floor Plan



First Floor



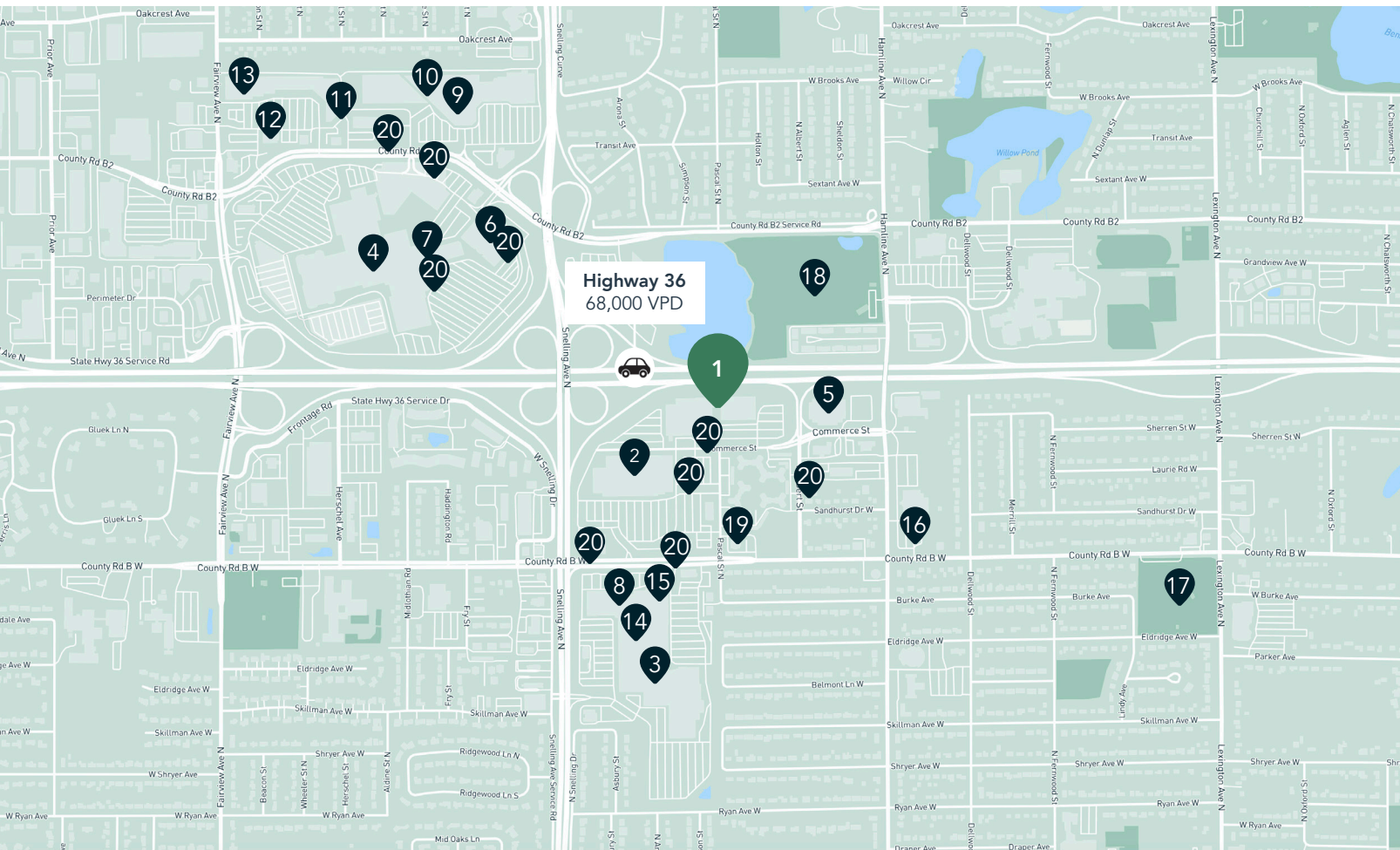
Site Plan



Prominent Existing Signage



The Neighborhood



Demographics

1 MILE AWAY

7,687 Population
3,371 Households
\$83,686 Avg. Income

3 MILES AWAY

83,435 Population
35,355 Households
\$85,330 Avg. Income

5 MILES AWAY

334,247 Population
132,176 Households
\$74,092 Avg. Income



Hot Spots

- | | | | | |
|----------------------------|----------------------------|-------------------------|-----------------------|-------------------------------------|
| 1. Minnesota Office Plaza | 5. Macy's | 9. Kohl's | 13. Bed Bath & Beyond | 17. Lexington Park |
| 2. Target, Starbucks & CVS | 6. Rosedale Transit Center | 10. Noodles and Company | 14. Chick-Fil-A | 18. Roseville Cedarholm Golf Course |
| 3. HarMar Mall | 7. CRAVE American Kitchen | 11. Lucky's 13 Pub | 15. D'Amico & Sons | 19. Huntington Bank |
| 4. Rosedale Center | 8. Kyoto Sushi | 12. Buffalo Wild Wings | 16. Speedway | 20. Bus stop |

Minnesota Office Plaza

1500 West Highway 36
Roseville, MN 55113



SENIOR PROPERTY MANAGER
LEASING AGENT
Eric Olsen

651-999-5539
eolsen@wellingtonmgt.com



CHIEF EXECUTIVE
OFFICER
Steve Wellington

651-999-5501
swellington@wellingtonmgt.com



PRESIDENT

David Wellington

651-999-5511
dwellington@wellingtonmgt.com



St. Paul-based Wellington Management, Inc. owns, manages and develops commercial and residential properties throughout the Twin Cities metro area. We work to make long-term community impact through careful district planning and neighborhood relationships.

Main (651) 292-9844
Fax (651) 292-0072
wellingtonmgt.com

Wellington Management © 2022 All rights reserved.