



**WELLINGTON**  
MANAGEMENT

# Plymouth Corporate Center

***3,434 SF of office/flex space available!***

2605 Fernbrook Lane North  
Plymouth, MN 55447

Ashley Urlick  
651-999-55106  
[aurlick@wellingtonmgt.com](mailto:aurlick@wellingtonmgt.com)



## Space Available

Owner, Manager, Leasing

81,000 SF tota; 3,434 SF available

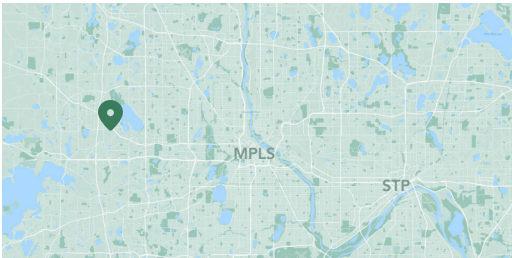
252 surface stalls, 3.1 : 1,000 SF

Single-story office building

16' clear height

Built in 1987

West Metro



## High-traffic suburban office/flex space in the heart of Plymouth's industrial district.

Plymouth Corporate Center is a single-story office/flex building located just south of Highway 55 and west of I-494. Acquired by Wellington in 2008, the property continues to be well-leased and maintained. It features ribbon glass throughout for abundant natural light, extensive surface parking, and beautiful, mature landscaping. The immediate area offers numerous food, retail and service amenities including Lucky's 13 Pub, Luce Line Brewery, Chick-fil-A and various other fast-casual lunch options. The property also offers easy access to Downtown Minneapolis and the western half of the Twin Cities metro area.

## HIGHLIGHTS

- Monument signage along Fernbrook Lane North
- 16' clear height, five dock doors and three drive-ins
- Numerous food, retail and service amenities nearby
- Roughly 15 minutes from Downtown Minneapolis
- Conveniently located just south of Highway 55 along the west side of I-494

# Available Suite

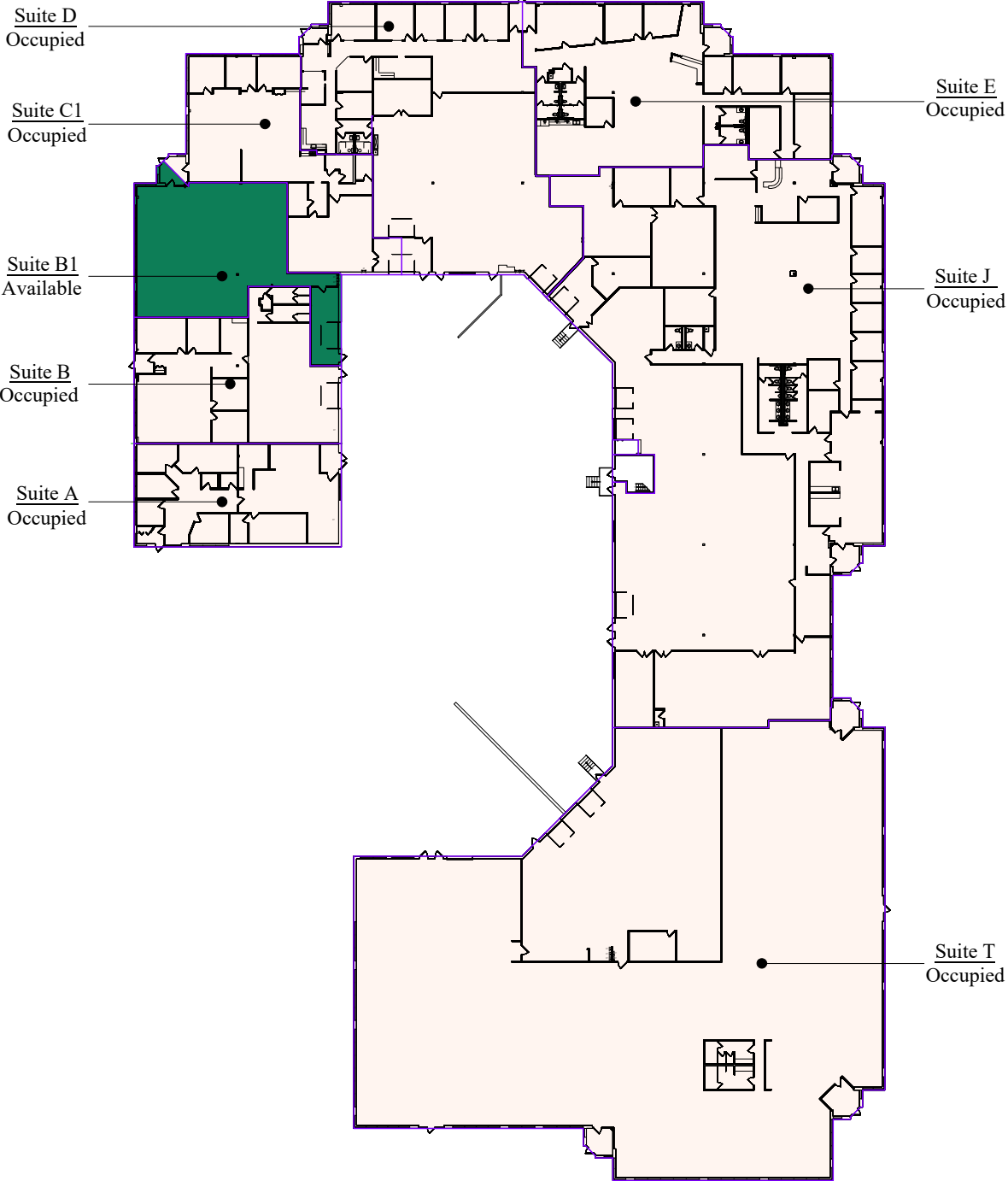


Suite B1 - 3,434 SF

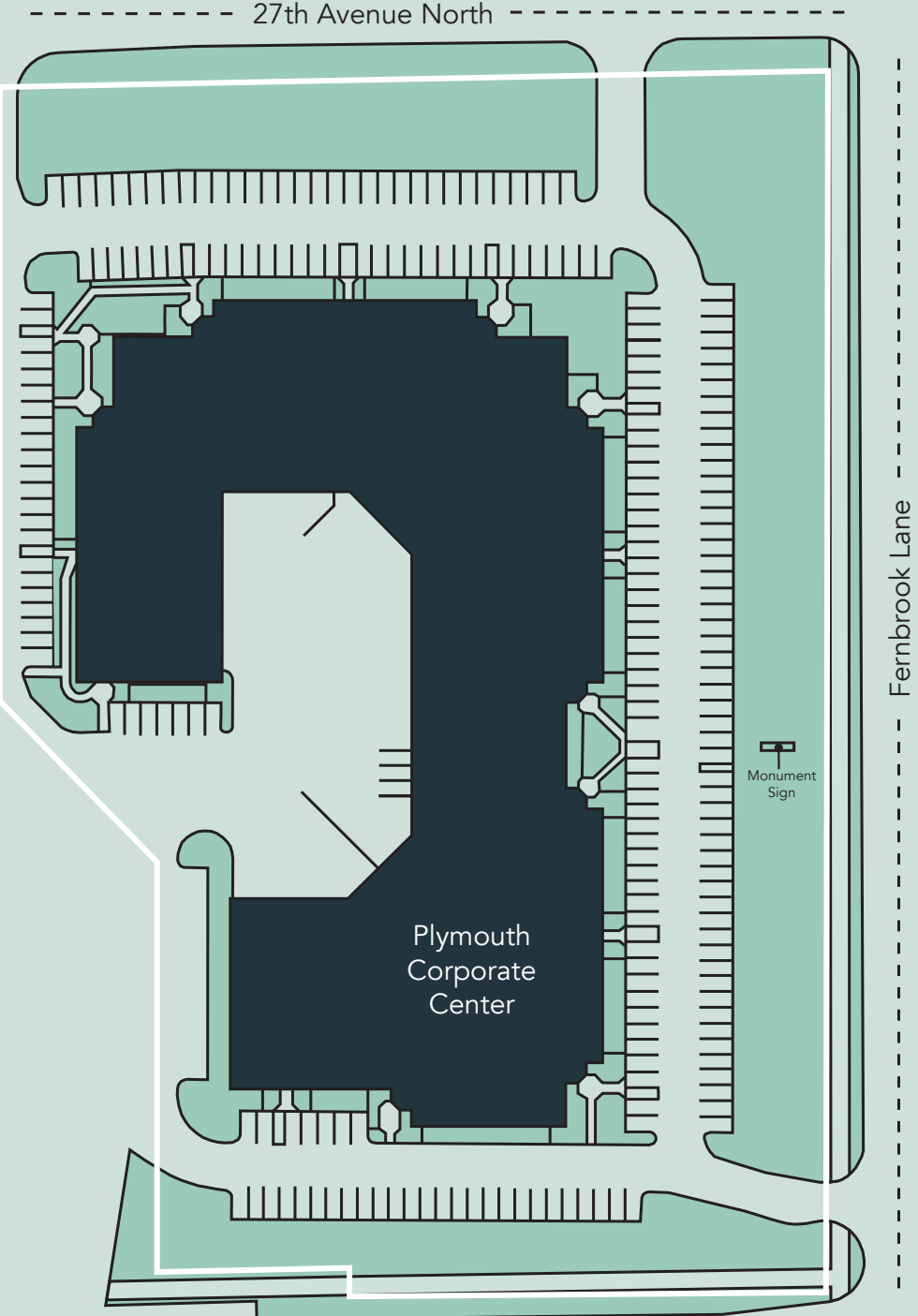
3D Tour 

# Floor Plan

- Building Common Areas
- Available Space
- Occupied Space



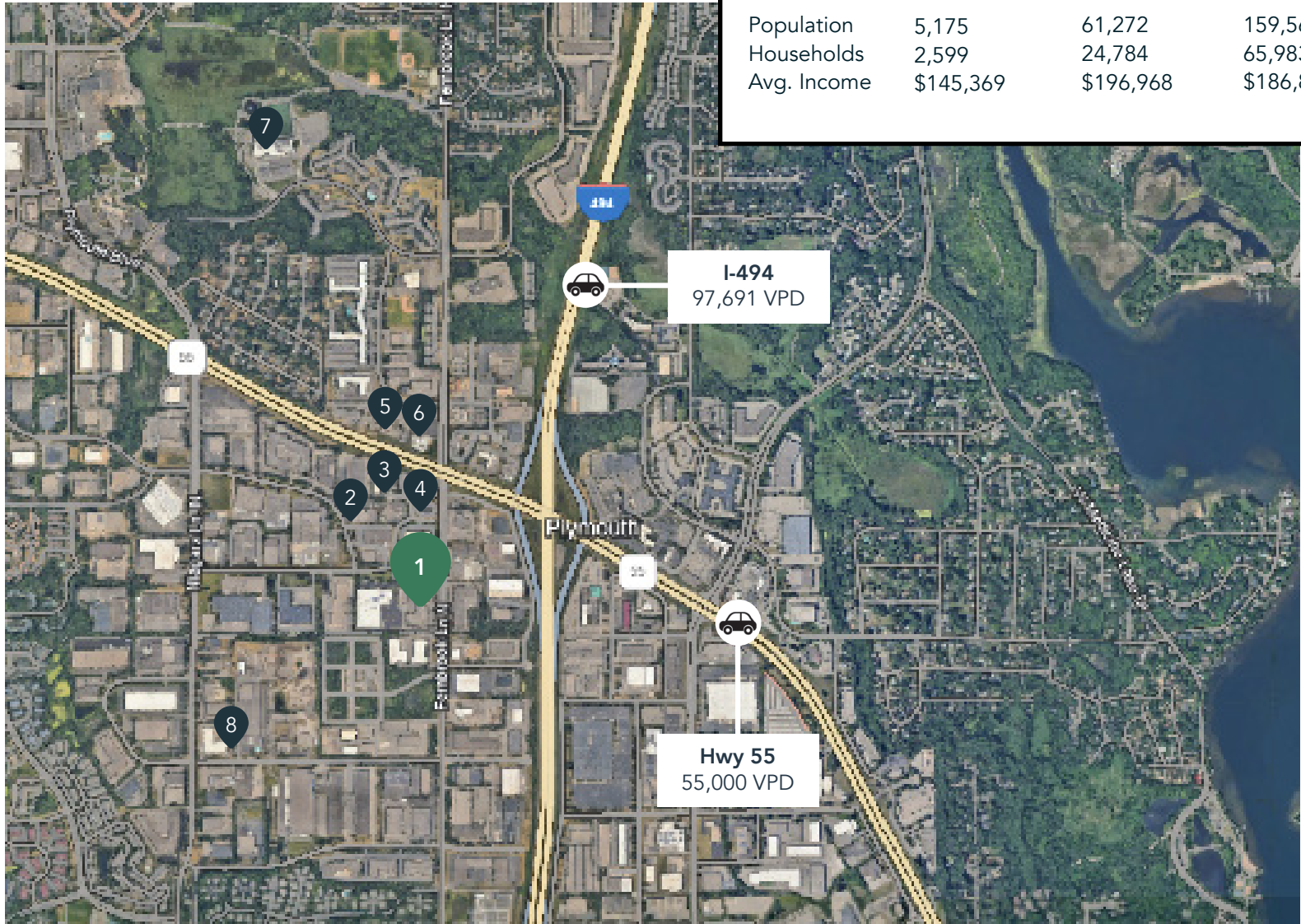
# Site Plan



# The Neighborhood

## Demographics

	1 MILE	3 MILES	5 MILES
Population	5,175	61,272	159,566
Households	2,599	24,784	65,983
Avg. Income	\$145,369	\$196,968	\$186,832



## Hot Spots

- |                              |                                  |  |
|------------------------------|----------------------------------|--|
| 1. Plymouth Corporate Center | 4. Wendy's                       | 7. Plymouth Community Center             |
| 2. Firehouse Subs            | 5. Davanni's Pizza & Hot Hoagies | 8. City of Plymouth Maintenance Facility |
| 3. Arby's                    | 6. Chick-fil-A                   |  |



# Plymouth Corporate Center

2605 Fernbrook Lane North  
Plymouth, MN 55447



PROPERTY MANAGER  
LEASING AGENT

Ashley Urlick

651-999-5506  
aurlick@wellingtonmgt.com



St. Paul-based Wellington Management, Inc. owns, manages and develops commercial and residential properties throughout the Twin Cities metro area. We work to make long-term community impact through careful district planning and neighborhood relationships.

Main (651) 292-9844  
Fax (651) 292-0072  
wellingtonmgt.com

Wellington Management © 2021 All rights reserved.