

Riverview Business Plaza

24,050 SF office/warehouse space for lease!

276-292, 296-312, 314-332, 334-346 Chester Street
264-308 Lafayette Frontage Road
St. Paul, MN 55107



WELLINGTON
MANAGEMENT

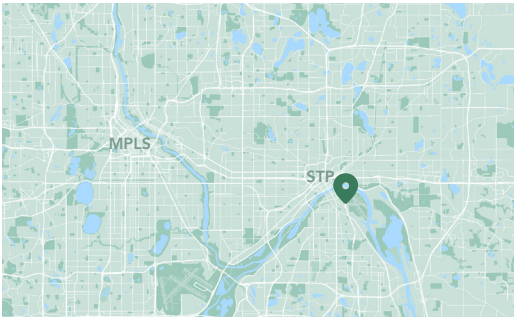


Vicki Karr
651-999-5537
vkarr@wellingtonmgt.com



Space Available

Owner, Manager, Leasing
173,000 SF industrial/flex space
24,050 SF available
301 surface stalls
Single-story industrial/flex buildings
Built 1979-1982
Concord-Robert Neighborhood



Office-showroom with a view: Soak in the Mississippi and downtown skyline.

Riverview Business Plaza is a five-building campus that hosts more than 30 tenants in ideally located office, production, and distribution spaces. After acquiring the property in 1994, Wellington Management completed an extensive renovation. Originally built between 1979 and 1982, the accessible campus is located immediately across the Mississippi River from Downtown St. Paul and adjacent to Holman Field Airport.

HIGHLIGHTS

- Excellent exposure, adjacency to airport, and easy access on and off Highway 52
- Stunning views of the Mississippi River and Downtown St. Paul skyline
- Single story, 14' clear height

Available Suites



WELLINGTON
MANAGEMENT

Suite 280-284 (Bldg A) - 8,853 SF



Suite 304 (Bldg B) - 4,922 SF [3D Tour](#) 

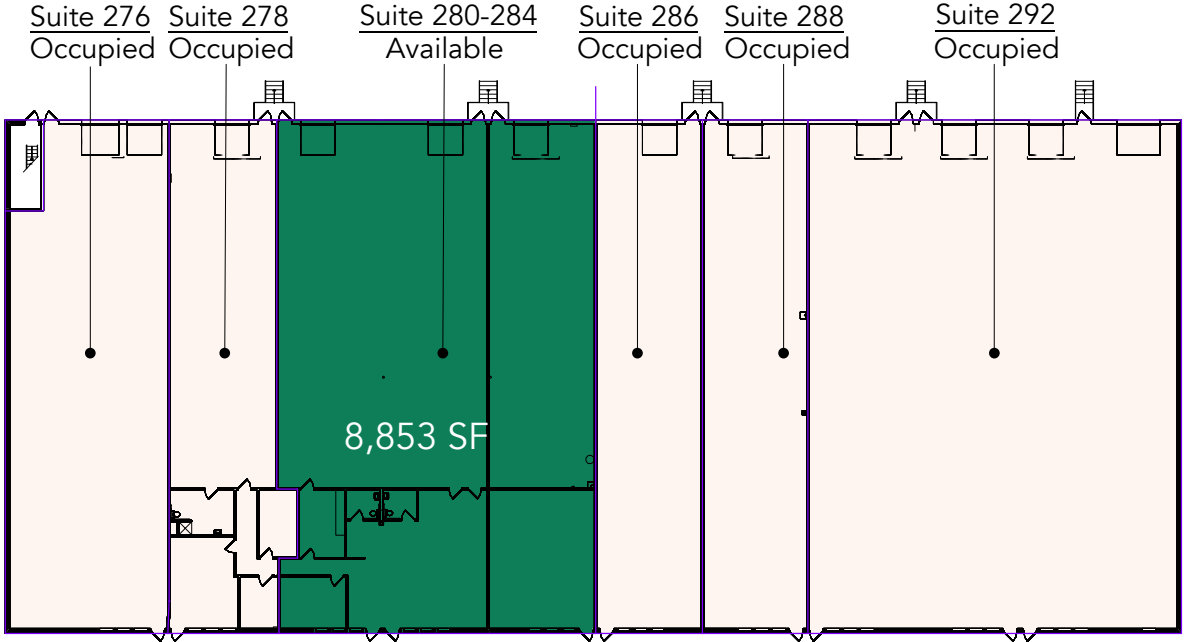


WELLINGTON
MANAGEMENT

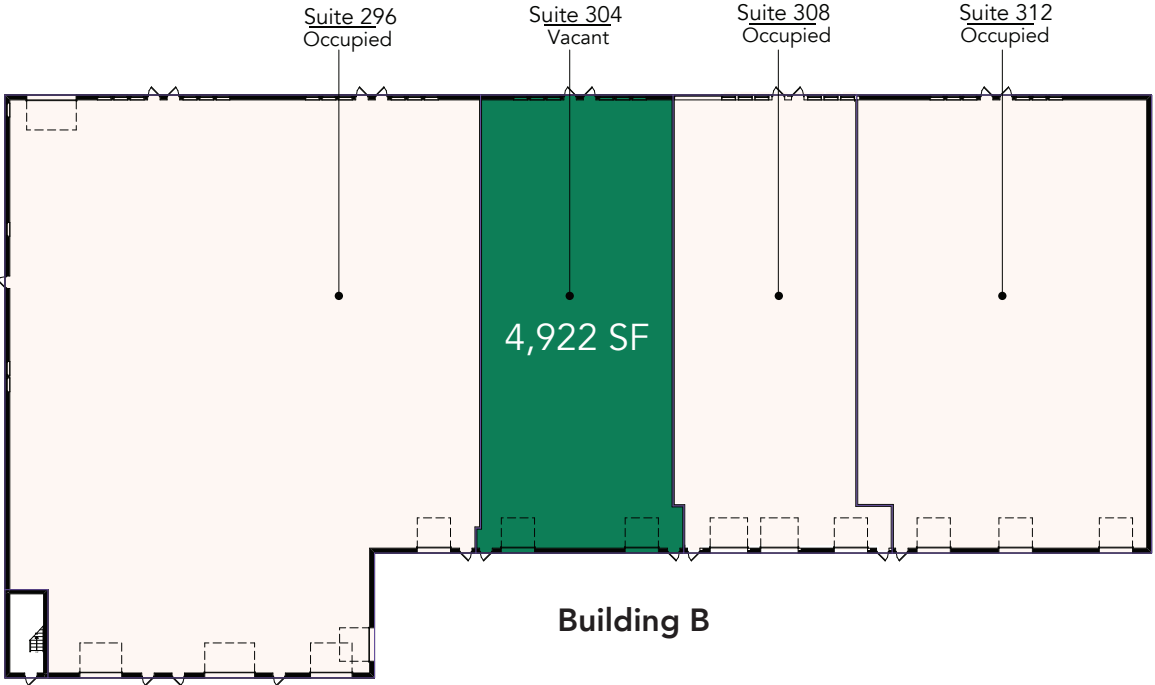
Suite 324 (Bldg C) - 10,275 SF

Floor Plan - Buildings A & B

- Building Common Areas
- Available Space
- Occupied Space



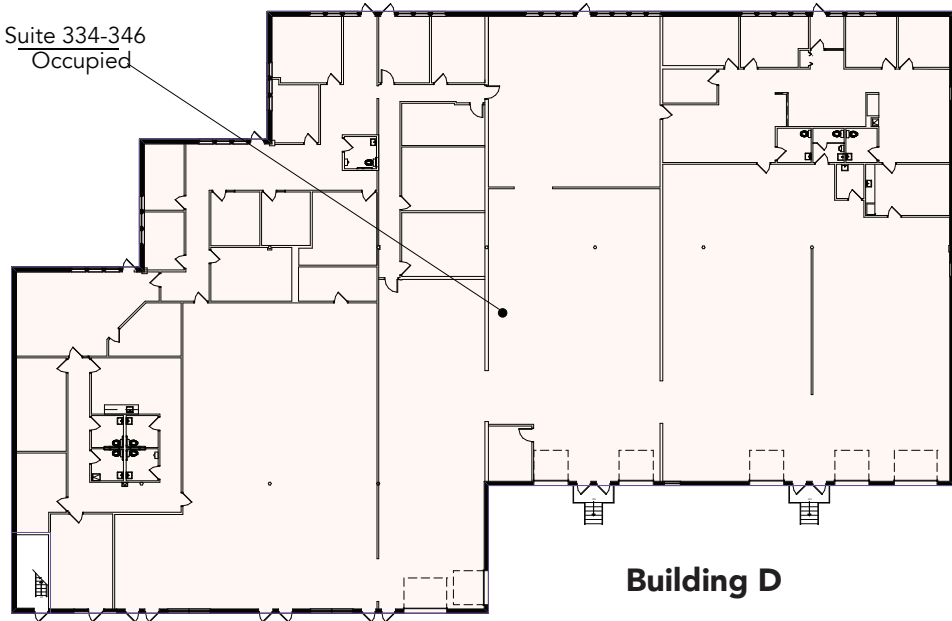
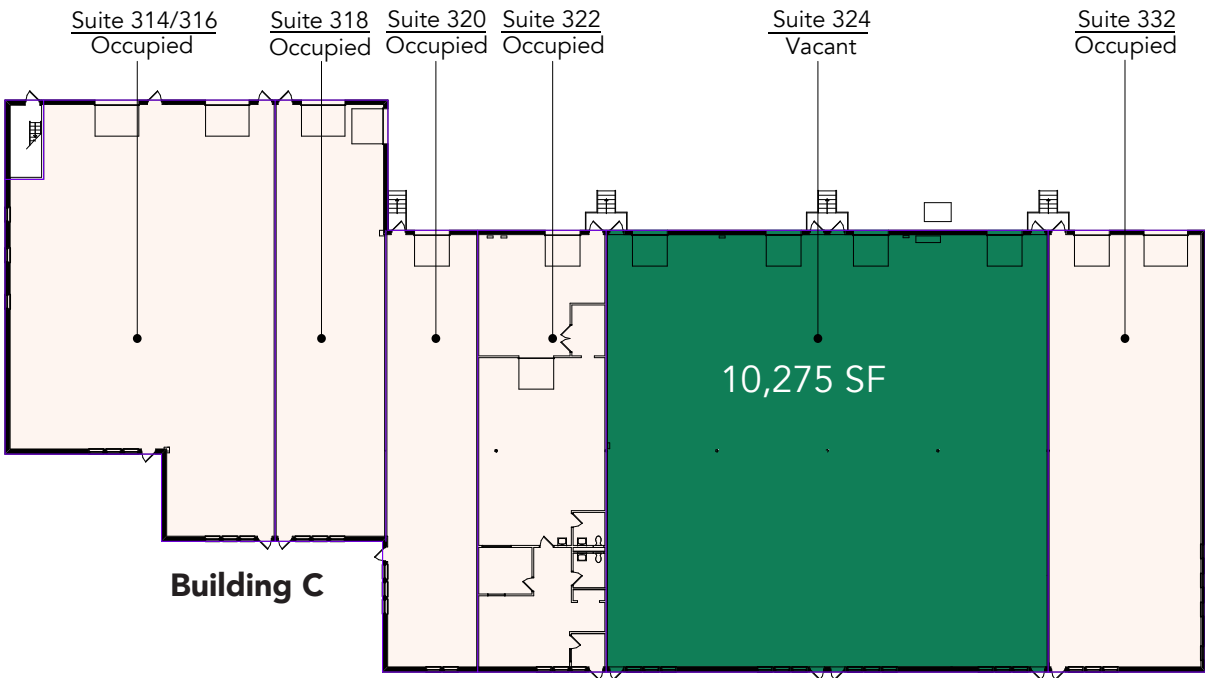
Building A



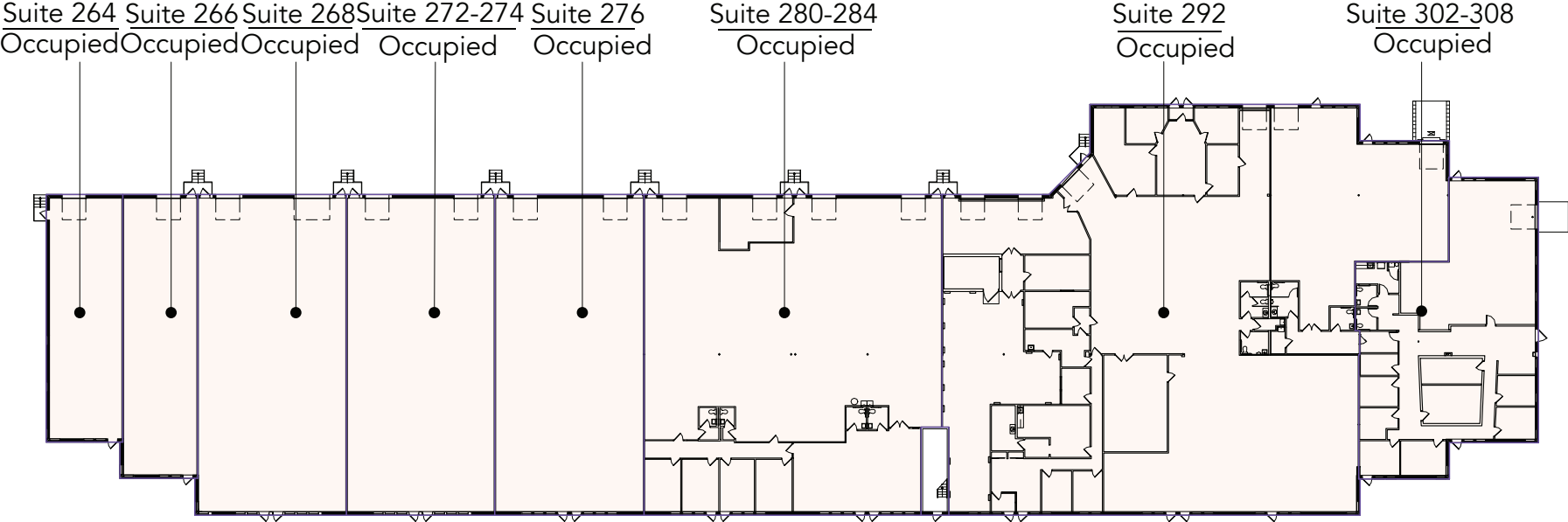
Building B

Floor Plan - Buildings C & D

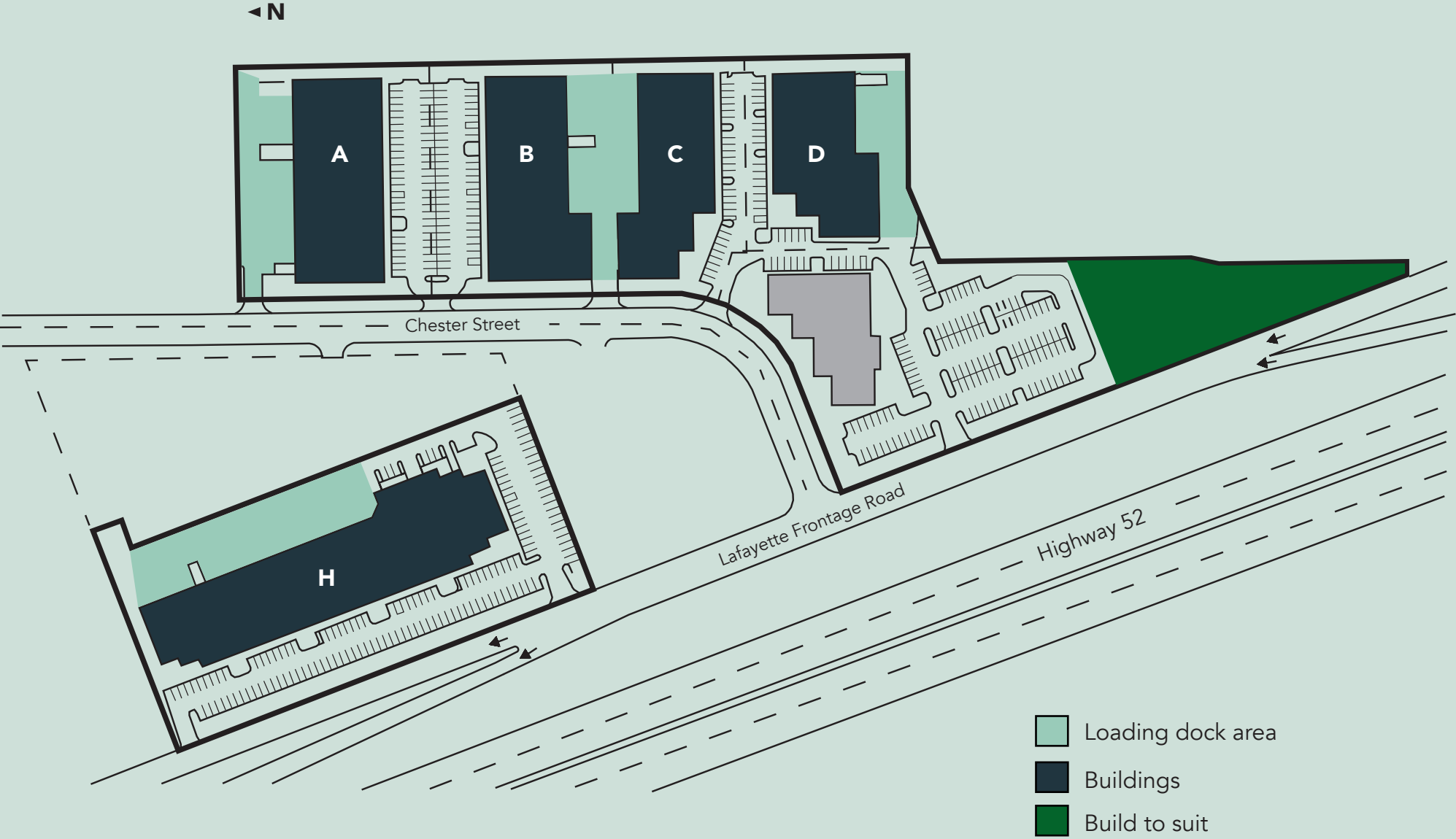
- Building Common Areas
- Available Space
- Occupied Space



Floor Plan - Building H



Site Plan



The Neighborhood

Demographics	1 MILE	3 MILES	5 MILES
POPULATION	8,818	141,167	340,373
HOUSEHOLDS	3,008	54,894	132,219
AVG. INCOME	\$97,575	\$99,908	\$108,343



Hot Spots

- | | | | | |
|------------------------------|---------------------------------|---------------------------------|----------------------------------|--------------------------------|
| 1. Riverview Business Plaza | 5. Harriet Island Regional Park | 9. Kincaid's Fish, Chop & Steak | 13. Cossetta | 17. Xcel Energy Center |
| 2. St. Paul Downtown Airport | 6. Raspberry Island | 10. Science Museum | 14. Boca Chica | 18. The St. Paul Hotel & Grill |
| 3. Holiday Gas Station | 7. Minnesota Boat Club | 11. Minnesota State Capitol | 15. United States Postal Service | 19. Holman's Table |
| 4. Starbucks | 8. CHS Field | 12. St. Paul RiverCentre | 16. El Burrito Mercado | 20. Joseph's Grill |

Riverview Business Plaza

276-292, 296-312, 314-332, 334-346 Chester Street
264-308 Lafayette Frontage Road
St. Paul, MN 55107



PROPERTY MANAGER
LEASING AGENT

Vicki Karr

651-999-5537
vkarr@wellingtonmgt.com



St. Paul-based Wellington Management, Inc. owns, manages and develops commercial and residential properties throughout the Twin Cities metro area. We work to make long-term community impact through careful district planning and neighborhood relationships.

Main (651) 292-9844
Fax (651) 292-0072
wellingtonmgt.com

Wellington Management © 2021 All rights reserved.