

Riverview Business Plaza

276-292, 296-312, 314-332, 334-346 Chester Street
264-308 Lafayette Frontage Road
St. Paul, MN 55107



WELLINGTON
MANAGEMENT



Kyle Gikling
651-999-5509
kgikling@wellingtonmgt.com



Space Available

Owner, Manager, Leasing

173,000 SF industrial/flex space

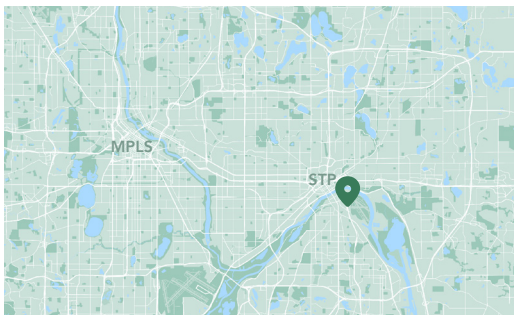
11,599 SF available

301 total surface stalls

Single-story industrial/flex buildings

Built 1979-1982

Concord-Robert Neighborhood



Office-showroom with a view: Soak in the Mississippi and downtown skyline.

Riverview Business Plaza is a five-building campus that hosts more than 30 tenants in ideally located office, production, and distribution spaces. After acquiring the property in 1994, Wellington Management completed an extensive renovation. Originally built between 1979 and 1982, the accessible campus is located immediately across the Mississippi River from Downtown St. Paul and adjacent to Holman Field Airport.

HIGHLIGHTS

- Excellent exposure, adjacency to airport, and easy access on and off Highway 52
- Stunning views of the Mississippi River and Downtown St. Paul skyline
- Single story, 14' clear height

Available Suites



Suite 284 (Bldg A) - 3,007 SF



Suite 304 (Bldg B) - 4,922 SF

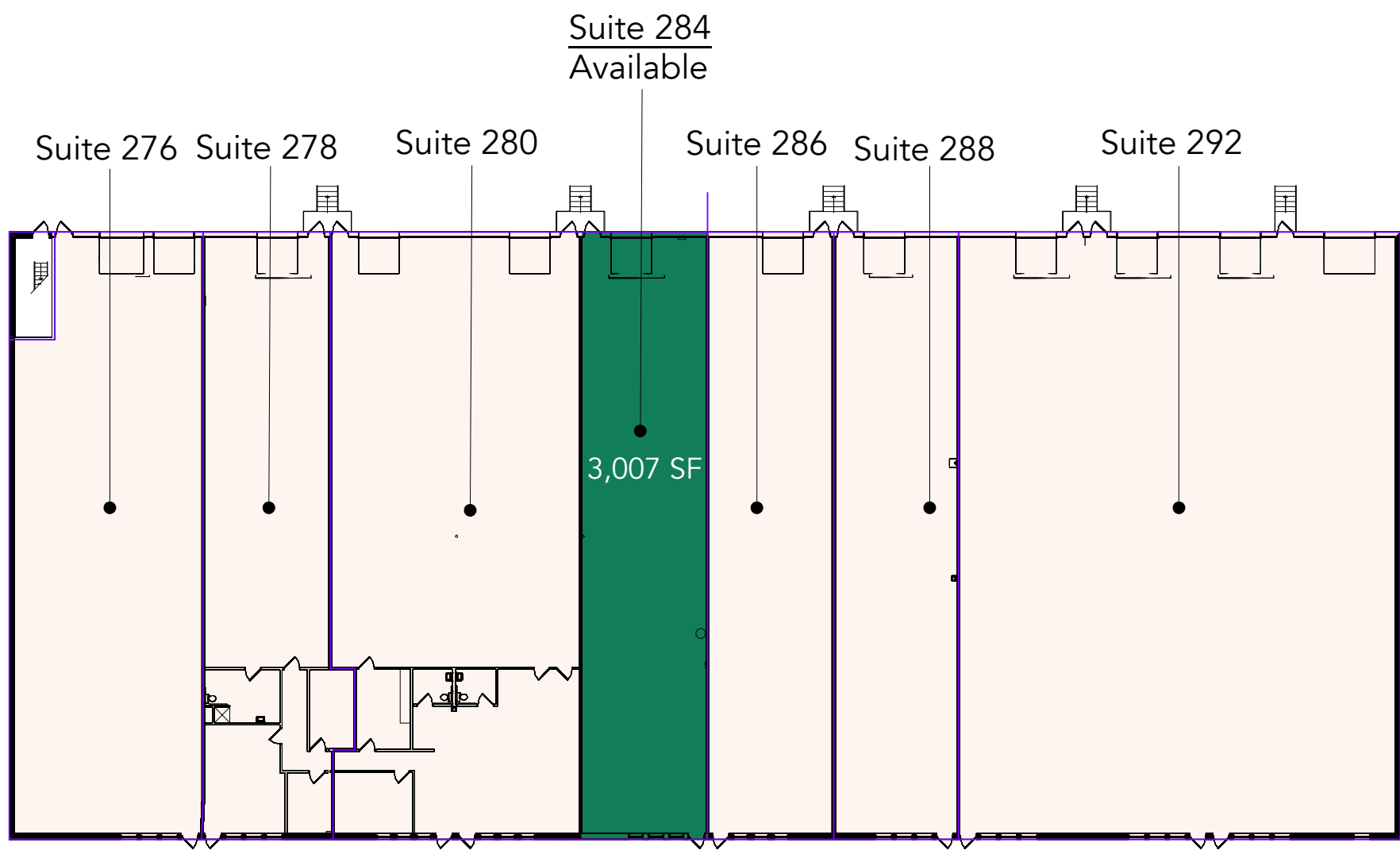
3D Tour [!\[\]\(339a16584d5da0f0a3ca4e9ec17bf6a1_img.jpg\)](#)



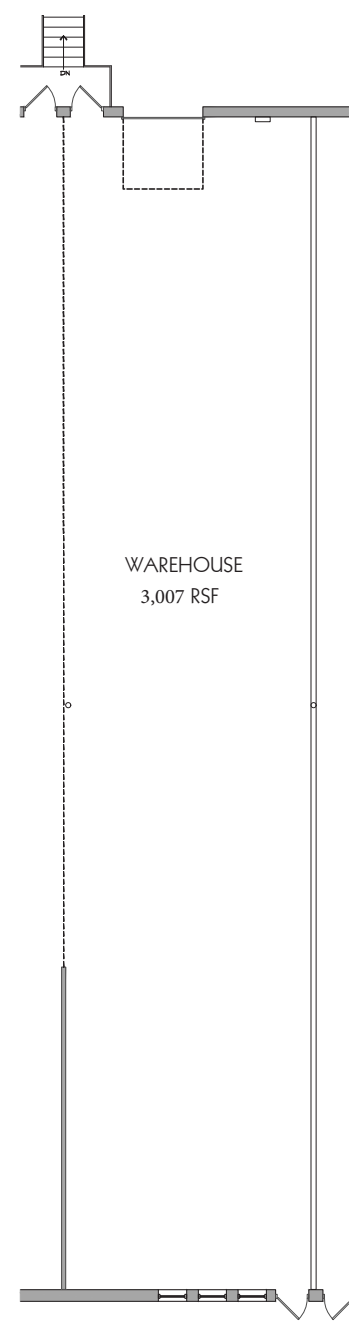
Suite 332 (Bldg C) - 3,670 SF *Available 9/1/25*

Floor Plan - Buildings A & B

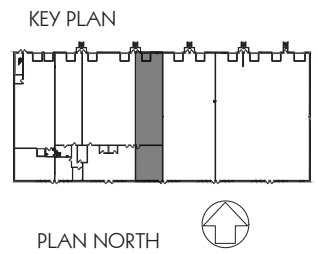
- Building Common Areas
- Available Space
- Occupied Space



Building A, Suite 284 Plan

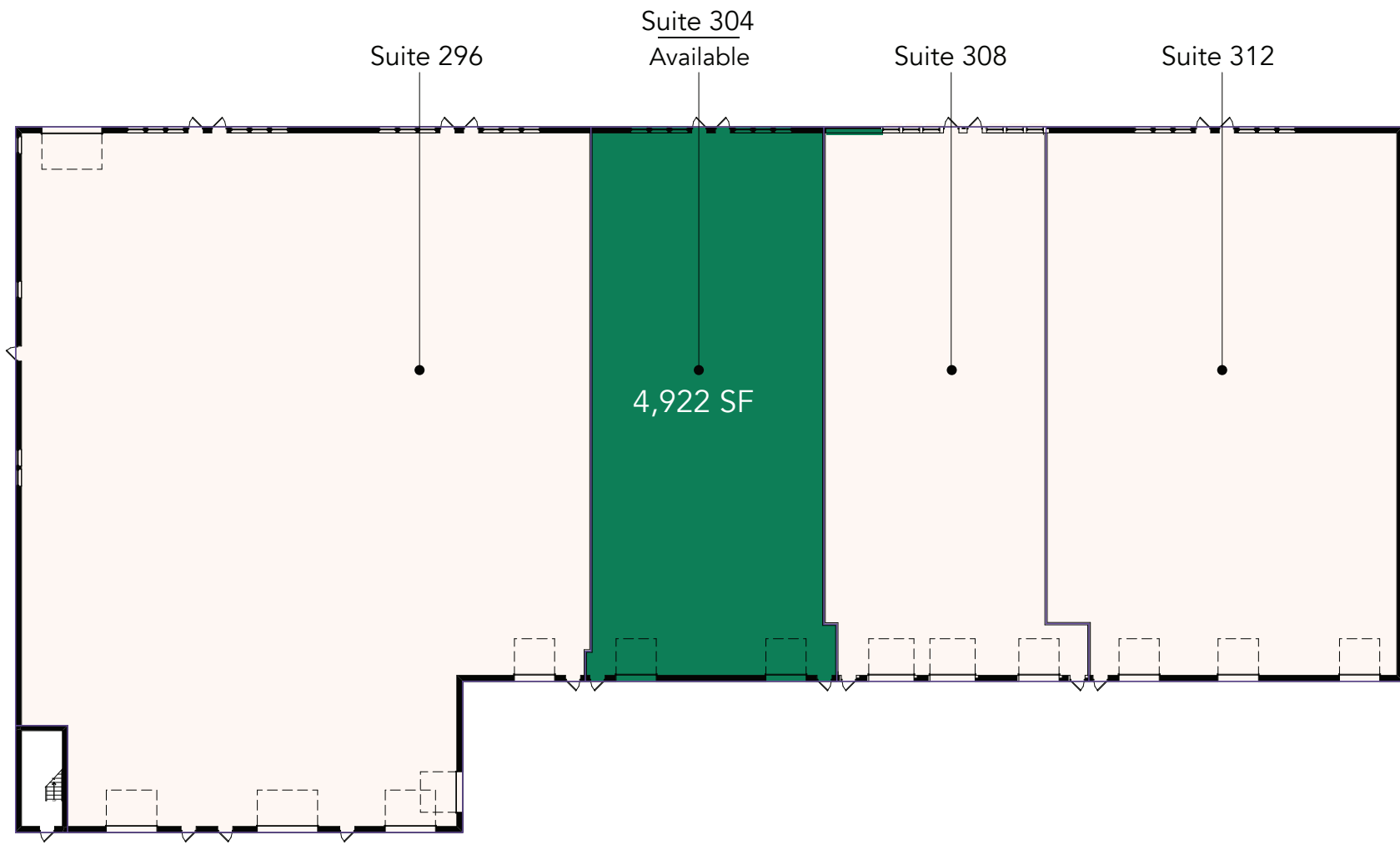


Suite 284 - 3,007 RSF
11-05-24

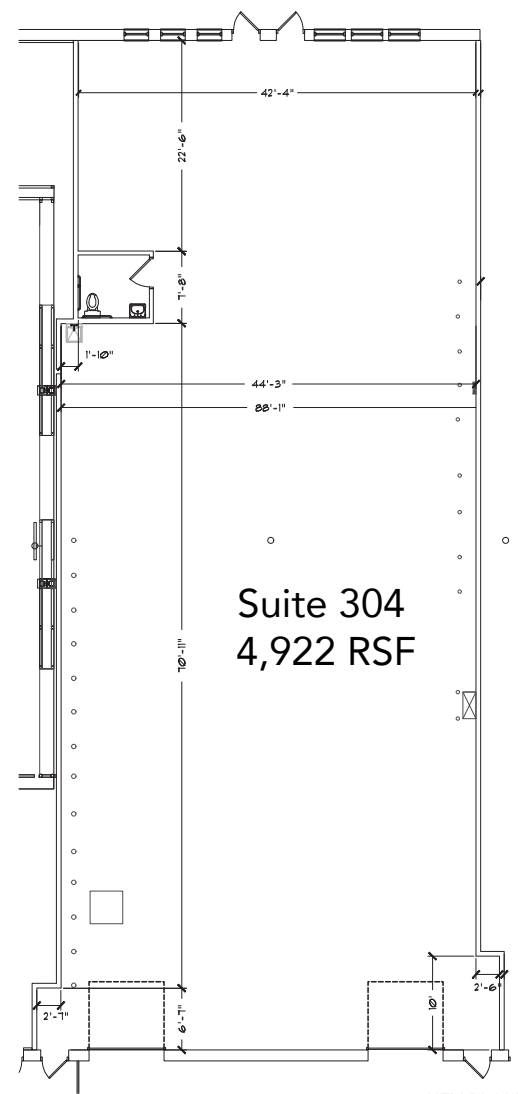


Floor Plan - Building B

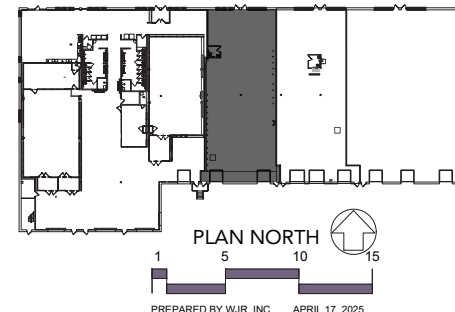
- Building Common Areas
- Available Space
- Occupied Space



Building B, Suite 304 Plan



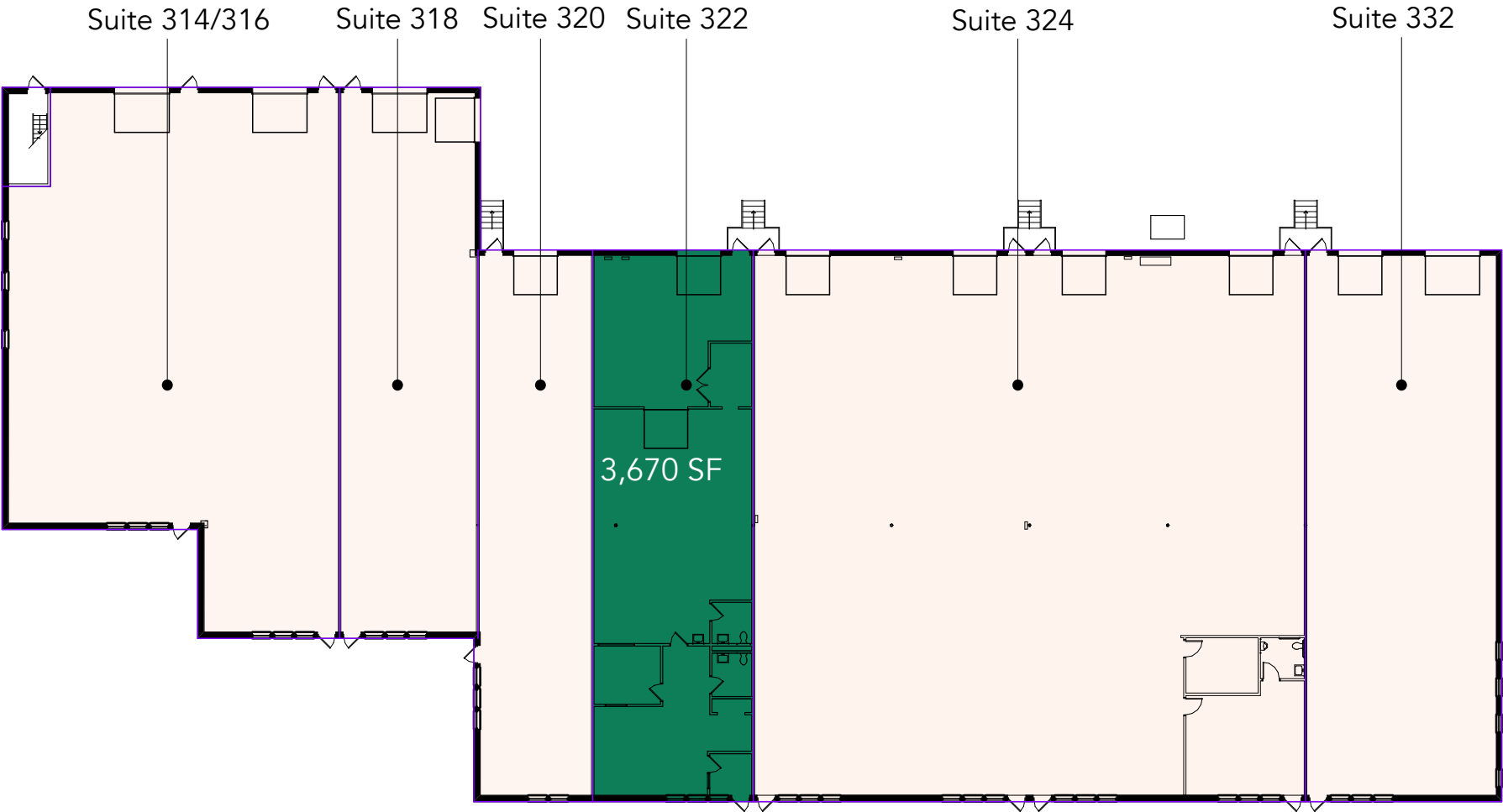
KEY PLAN



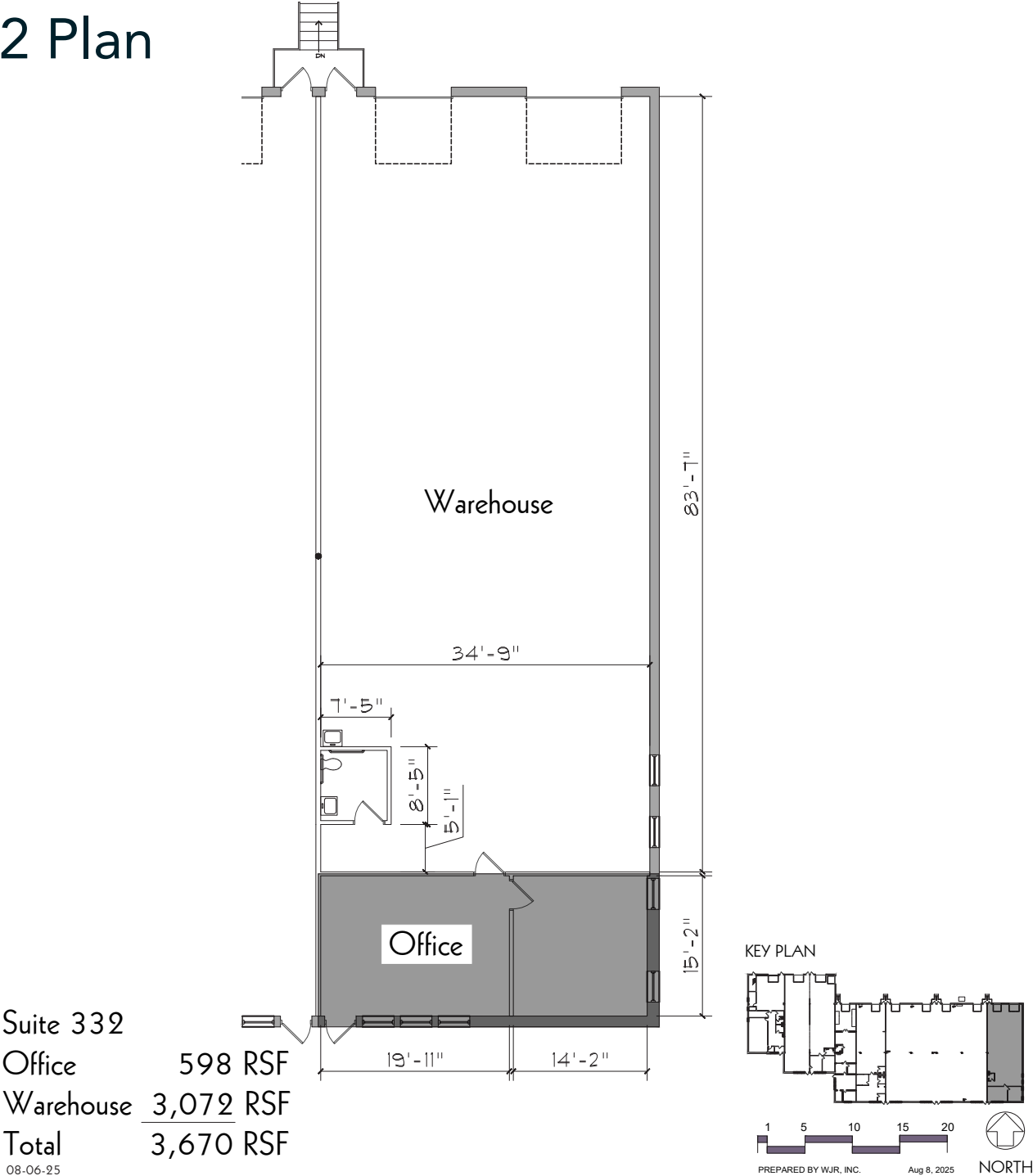
Suite 304 - 4,922 RSF

Floor Plan - Building C

- Building Common Areas
- Available Space
- Occupied Space

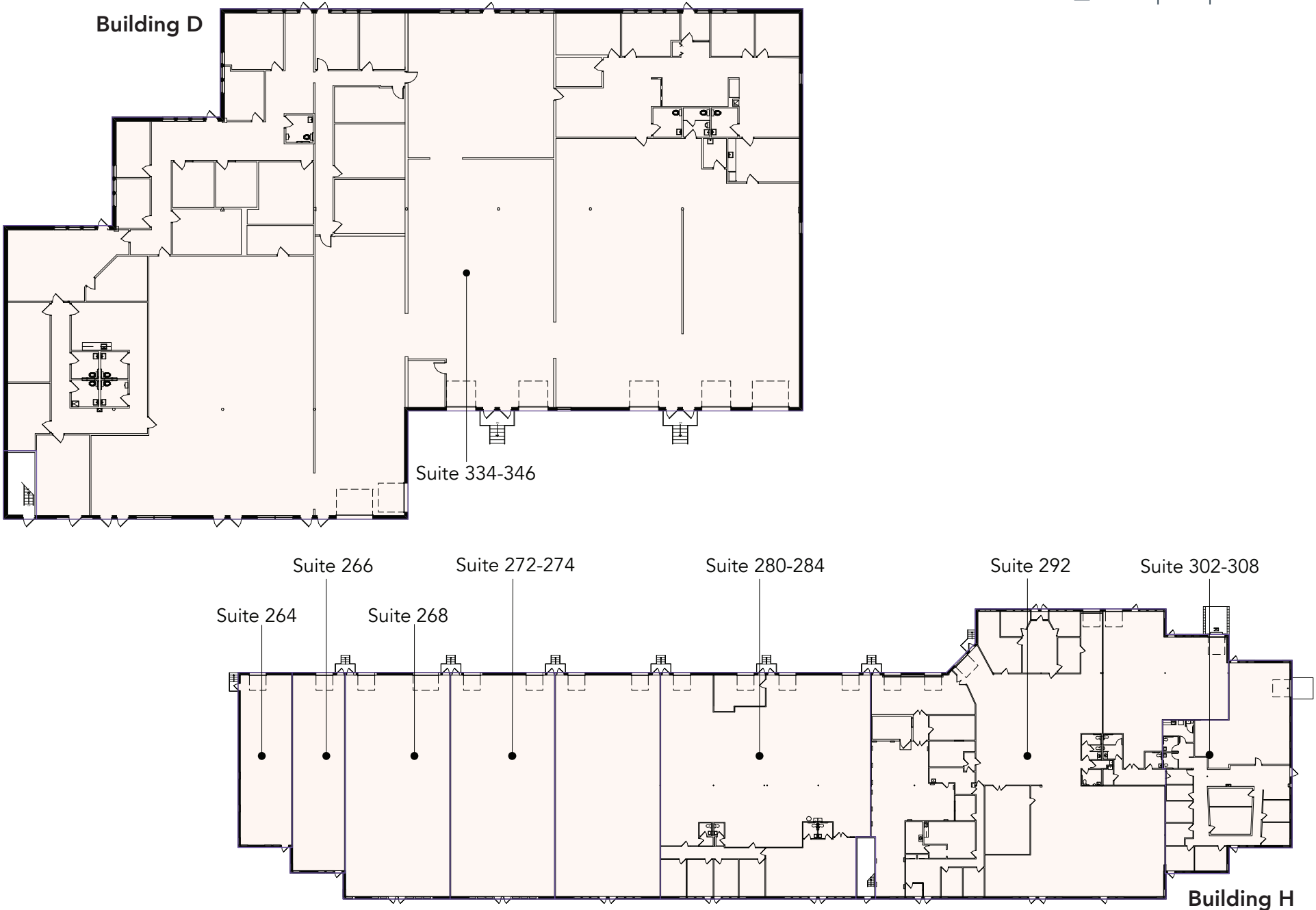


Building C, Suite 332 Plan



Floor Plan - Buildings D & H

- Building Common Areas
- Available Space
- Occupied Space



Site Plan



The Neighborhood

Demographics	1 MILE	3 MILES	5 MILES
POPULATION	8,949	143,372	343,148
HOUSEHOLDS	3,504	55,326	132,164
AVG. INCOME	\$88,629	\$93,702	\$101,040



Hot Spots

- | | | | | |
|------------------------------|---------------------------------|---------------------------------|----------------------------------|--------------------------------|
| 1. Riverview Business Plaza | 5. Harriet Island Regional Park | 9. Kincaid's Fish, Chop & Steak | 13. Cossetta | 17. Xcel Energy Center |
| 2. St. Paul Downtown Airport | 6. Raspberry Island | 10. Science Museum | 14. Boca Chica | 18. The St. Paul Hotel & Grill |
| 3. Holiday Gas Station | 7. Minnesota Boat Club | 11. Minnesota State Capitol | 15. United States Postal Service | 19. Holman's Table |
| 4. Starbucks | 8. CHS Field | 12. St. Paul RiverCentre | 16. El Burrito Mercado | 20. Joseph's Grill |

Riverview Business Plaza

276-292, 296-312, 314-332, 334-346 Chester Street
264-308 Lafayette Frontage Road
St. Paul, MN 55107



PROPERTY MANAGER
LEASING AGENT

Kyle Gikling

651-999-5509
kgikling@wellingtonmgt.com



St. Paul-based Wellington Management, Inc. owns, manages and develops commercial and residential properties throughout the Twin Cities metro area. We work to make long-term community impact through careful district planning and neighborhood relationships.

Main (651) 292-9844
Fax (651) 292-0072
wellingtonmgt.com

Wellington Management © 2021 All rights reserved.