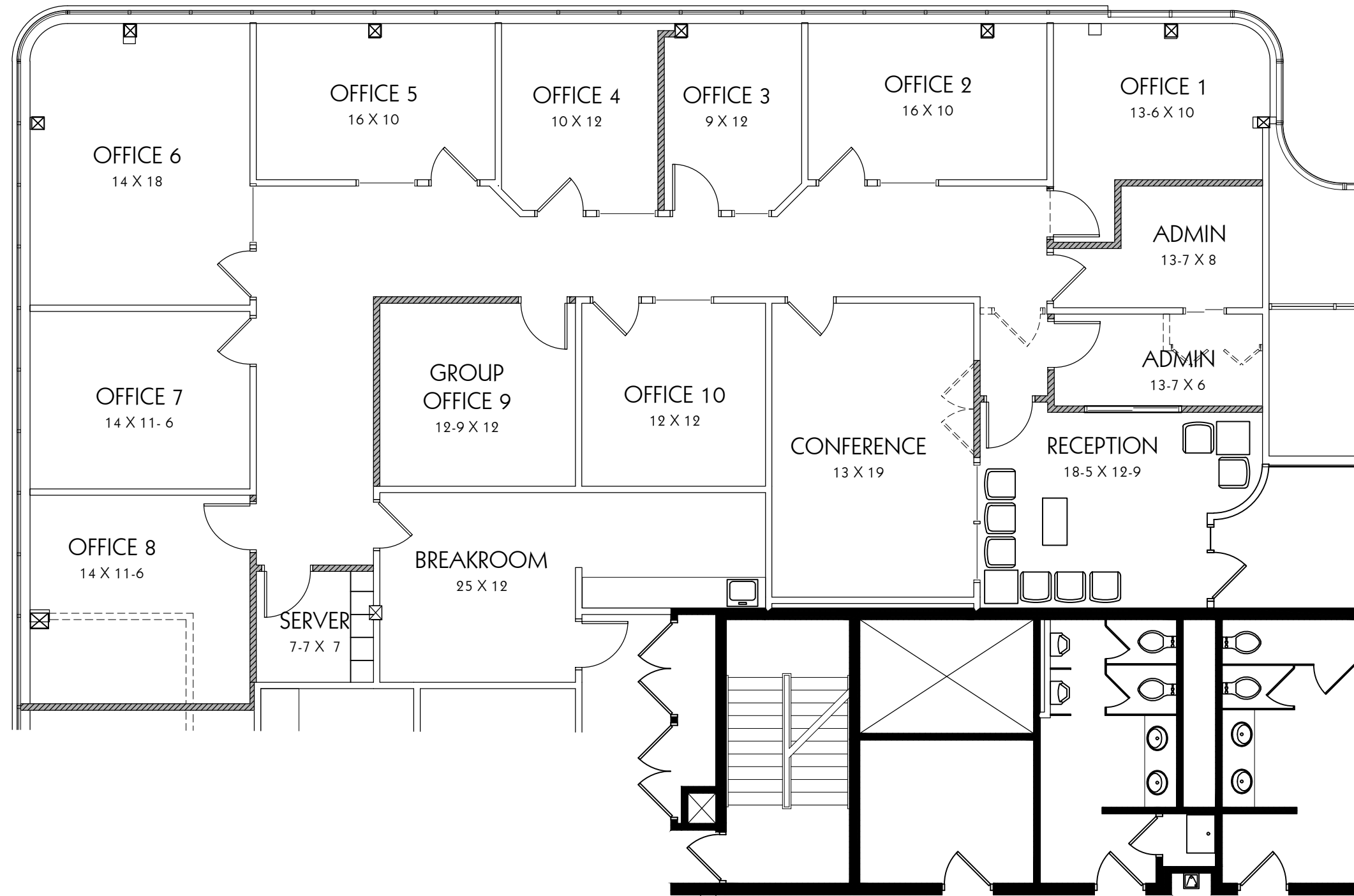




Winther-Johnson-Robinson  
Architects-Designers

8175-B Lewis Road  
Golden Valley, Minnesota 55427  
Phone: 763-398-0452  
Fax: 763-398-0455

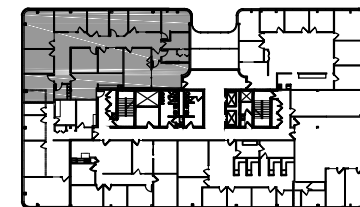
Roseville Office Plaza  
1970 Oakcrest Ave, Roseville, MN 55113



KEY PLAN - 2nd FLOOR



Suite 200 - 3,912 RSF



1  
A1  
FIT PLAN

SCALE: 1/8" = 1'-0"

Issues & Revisions:

Origination Date:

Project No.:

Scale:  
As Noted

Drawn By: RWS  
Approval:

A1

OF 1